



**MUTINEER 15 NATIONAL CHAMPIONSHIPS**  
**HOSTED AND ORGANIZED BY:**  
**TAMPA SAILING SQUADRON, APOLLO BEACH, FL**  
**OCTOBER 19 - 23, 2015**

**SAILING INSTRUCTIONS**

**1 RULES**

The regatta will be governed by the *rules* as defined in *The Racing Rules of Sailing*.

**2 NOTICES TO COMPETITORS**

Notices to competitors will be posted on the official notice board located on the front porch at TSS.

**3 CHANGES TO SAILING INSTRUCTIONS**

Any change to the sailing instructions will be posted before 0800 on the day it will take effect, except that any change to the schedule of races will be posted by 1800 on the day before it will take effect.

**4 SIGNALS MADE ASHORE**

- 4.1 Signals made ashore will be displayed from the flagpole located at TSS.
- 4.2 When flag AP is displayed ashore, '1 minute' is replaced by 'not less than 45 minutes' in the race signal. This changes Race Signal AP.

**5 RACING AREA**

The racing area will be on Tampa Bay as shown in Attachment I.

**6 SCHEDULE OF RACES**

Date	Time	
Oct 20	1400	First scheduled warning, practice races
Oct 21, 22	1000	First scheduled warning, multiple races to follow
Oct 23	0900	First scheduled warning, multiple races to follow
	1300	No warning after this time

**7 CLASS FLAG**

The class flag will be the Mutineer 15 symbol on white background.

**8 THE COURSES**

- 8.1 The diagrams in Attachment II show the courses, including the approximate angles between legs and the order in which marks are to be passed.
- 8.2 If only one leeward mark is present it shall be rounded to port.
- 8.3 The course, approximate magnetic bearing and distance in nautical miles to the first mark will be displayed from the race committee signal boat prior to the warning signal for each race. An example is shown below:

<b>5</b>	Five legs, finishing to weather
<b>270</b>	Approx magnetic bearing to windward mark
<b>1.0</b>	1.0 nm to windward mark

**9 MARKS**

Mark Location	Original Mark	New Mark (see SI 11)
Windward	5' Yellow Tetrahedron	Large Orange Cylinder
Offset	Small Orange Tomato	
Jibe	5' Yellow Tomato	
Leeward	5' Yellow Tomato	
Start/Finish	30" Yellow Tetrahedrons and RC Vessels	



## 10 THE START

The starting line will be between a staff displaying an orange flag on the race committee signal boat at the starboard end and the course side of the starting mark.

## 11 CHANGE OF THE NEXT LEG OF THE COURSE

11.1 To change the next leg of the course, the race committee will:

- (a) lay a new mark or
- (b) move the jibe mark or
- (c) move the finishing line or
- (d) move the leeward mark(s).

11.2 When a new mark is laid, the original mark will be removed as soon as possible. When in a subsequent change a new mark is replaced, it will be replaced by an original mark.

11.3 Individual gate marks may be moved (without signal) to maintain the configuration of the course.

## 12 THE FINISH

12.1 The finishing line will be between a staff displaying an orange flag on a race committee boat and the course side of the finishing mark.

12.2 Flag A displayed, with no sound, while boats are finishing means 'No more racing today.'

## 13 TIME LIMITS

13.1 The time limit for the first boat in each race is 2 hours.

13.2 Boats still racing more than 30 minutes after the first boat sails the course and finishes will be scored TLE and will receive two more points than the number of finishers. This changes RRS 35, 63.1, A4, A5 and A11.

## 14 SCORING

14.1 If five or more races are sailed, a boat's worst score shall be discarded. If 10 or more races are sailed, a boat's 2 worst scores shall be discarded.

14.2 Three completed races are required for this regatta.

## 15 PROTESTS AND REQUESTS FOR REDRESS

15.1 Protest forms are available at the protest desk in TSS. Protests shall be delivered there within 60 minutes after the race committee finish boat docks. The docking time will be posted on the Official Notice Board.

15.2 Notices will be posted within 15 minutes after the protest time limit to inform competitors of hearings in which they are parties to or named as witnesses. Protests will be heard in the approximate order of receipt in the TSS club house.

## 16 SAFETY

16.1 Prior to the warning signal for the first race of each day, each boat is requested to check in by sailing by the race committee signal boat on starboard tack and hailing its sail number.

16.2 A boat retiring from a race or leaving the racing area early shall promptly notify the race committee either by hail or VHF. If that is not possible please contact TSS at 813-645-8377.

## 17 RADIO COMMUNICATION

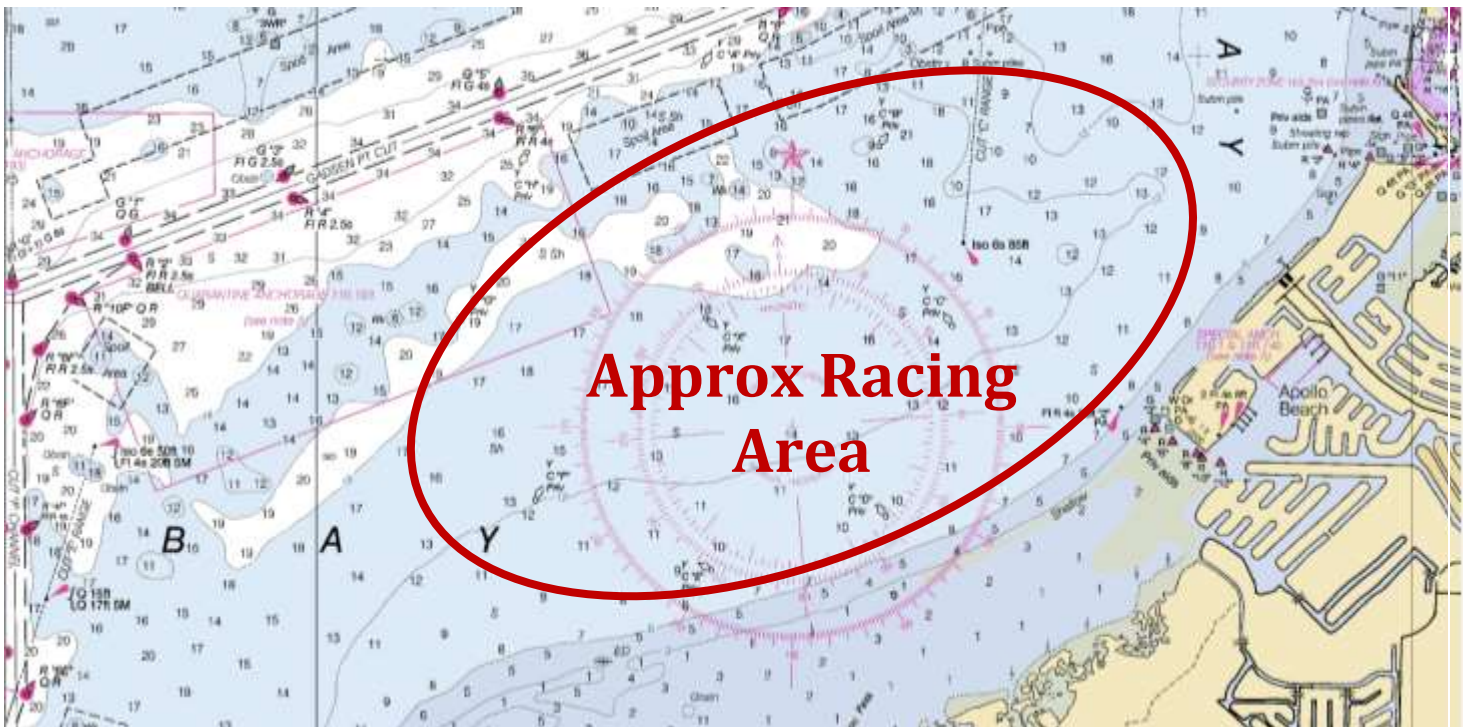
MCA rules permit carrying VHF radios and cell phones aboard at all times, but they shall not be used for sending or receiving except in an emergency.

## 18 DISCLAIMER OF LIABILITY

Competitors participate in the regatta entirely at their own risk. See RRS 4, Decision to Race. The organizing authority will not accept any liability for material damage or personal injury or death sustained in conjunction with or prior to, during, or after the regatta.



## Attachment I – Approximate Racing Area





## Attachment II – Sample Course Diagrams

Course 4	Course 5	Course T
<p>Start, 1 (port), 1a (port), between 2S and 2P, 1(port), 1a (port), finish</p>	<p>Start, 1 (port), 1a (port), between 2S and 2P, 1(port), 1a (port), between 2S and 2P, finish</p>	<p>Start, 1 (port), 2 (port), 3 (port), 1(port), finish</p>