

# 2014 Connecticut State Optimist Championship

Sunday October 19, 2014

*Niantic Bay Yacht Club & ECSA Mudratz Inc.*

## **SAILING INSTRUCTIONS**

1.0 Rules: The regatta will be governed by the Racing Rules of Sailing 2013 – 2016, the Notice of Race, Rules of the U.S. Optimist Dinghy Association and these Sailing Instructions.

1.1 Participants **MUST** wear a USCG approved & properly fastened PFD at all times on the water. Use of inflatable PFD or buoyancy aids is not permitted. A whistle is recommended. This changes rule 40.

1.2 A competitor may not be protested for breaking a class rule that requires membership. An Optimist competitor may not be protested for breaking the IODA requirement for a paddle. This changes rule 60.1.

1.3 Protest flags **ARE** required. This changes rules 61.1(a).

2.0 Notice to Competitors and Changes to Sailing Instructions

Any notices to competitors or changes to the sailing instructions will be posted on the official notice board inside the clubhouse.

3.0 Signals Made Ashore

Any signals made ashore by the Race Committee will be flown from the moored Race Committee boat.

4.0 Schedule of Races

The race committee will run as many races as it can within the time limits stated in the Schedule of Races below.

09:30-10:30 Registration, Rigged and Ready

09:30-10:30 Safety Check

10:30 Skipper's meeting

10:45 Harbor Start

11:15 First Warning

No warning for a new race after 15:00

5.0 Courses:

Course will be posted on the committee boat and/or announced by hailer – with letters indicating the courses as shown attached to these sailing instructions.

5.1 Race Area will be Niantic Bay

5.2 Marks: Course marks will be yellow, orange, or red inflatable marks. Leave all marks to PORT.

5.3 Start / Finish: The start/finish line will be between a mast (pole) on the committee boat bearing an orange flag and the course side of the starting mark.

## 6.0 Safety

- 6.1 Each boat must comply with the USODA rules. Inspection of some or all boats may be carried out at any time during the events.
- 6.2 Check In: All boats MUST check in with the race committee boat once the committee boat is on station by passing astern on starboard tack, hailing your sail number & receiving acknowledgement by the race committee.
- 6.3 Boats Retiring: If any competitor leaves the racing area prior to the end of racing, they shall notify the race committee or a support boat before retiring, or if that is impossible, the club office immediately upon arrival to shore.
- 6.4 The Race Committee and clubhouse will transmit and monitor on channel 72.
- 6.5 As the conditions of participation, any boat in any race or related activity sponsored or undertaken by the Niantic bay Yacht Club and/or Mudrats Inc, the owner and sailor of each boat agree that the safety of the boat and the sailor and the decision whether or not to start or continue to race is solely their responsibility. Also, responsibility for evaluating the wind, sea and weather conditions rests with each participant. Assistance from the race committee, patrol boats, or other support boats and personnel aboard them is at the risk of the participant.

## 7.0 The Start

- 7.1 The starting signals will be 3 Minute Sound Signals as per RRS Appendix S.
- 7.2 Recalls: Individual Recalls due to OCS will be signaled by sounding a single horn and hoisting code flag X. The Race Committee will attempt to hail OCS boats but each boat is responsible for starting properly. Failure to hear the RC hail will not be grounds for redress.
- 7.3 General Recalls: General Recalls will be signaled by two horns and hoisting code flag First Substitute.
- 7.4 Rule 30.1: If Rule 30.1 ('around the ends rule') is to be used code flag I will be hoisted with or prior to the warning signal.

8.0 Abandonment: Any race to be abandoned will be signaled by 3 sound signals and the hoisting code flag N.

9.0 Time Limit: The first boat to finish in any race must finish within 60 minutes or that race will be abandoned. Any boat failing to finish within 30 minutes of the first boat to finish in a given race will be scored Time Limit Expired (TLE) and be awarded points equal to the number of boats that finished within the time limit plus 1 (changes Appendix A).

10.0 Protests: In addition to following all other RRS regarding protests, a protesting boat must notify the race committee boat immediately after clearing the finish line. Protests must be filed at the registration table in the clubhouse no later than 30 minutes after the committee boat has docked.

11.0 Scoring: Scoring will be Low Point as per RRS Appendix A except here will be NO throw out if 5 or fewer races are sailed (changes Appendix A). Two races constitute a regatta for purpose of awards.

12.0 Disposal of Trash: Boats observed purposefully discharging trash into the water may either be disqualified from all races or be subject to other penalty as determined by the Protest Committee.

## 13.0 Support Boats:

- 13.1 Team leaders, coaches and other support personnel shall not be in the racing area from the time of the preparatory signal for the start until all boats have finished or the race committee signals a postponement, general recall or abandonment. The penalty for failing to comply with this

requirement may result in the disqualification of all boats associated with the support personnel who do so.

13.2 Coaches/Adults PFD: Race committee, mark and safety boat operators, coaches, parents, etc. – are strongly encouraged to wear fully secured PFDs while on the water.

13.3 Rendering Assistance: All coach boats and other support boats/support personnel must agree to aid any competitor in distress or requesting assistance of any sort. Please monitor channel 72.

13.4 Coach/Support Boats can be launched/retrieved at Niantic River State Boat Ramp -2nd Street Waterford, CT. Directions available from registration table.

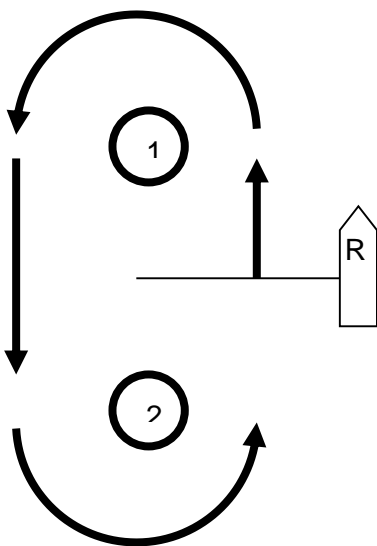
14.0 Tracking Devices: Tracking devices such as smart phones or GPS units may be placed on board for these events for the purpose of tracking location only. These devices are not allowed to be viewed by the competitors until racing is completed for the day.

15.0 Prizes: Prizes will be awarded to the top 3 finishers in the Red, Blue, and White fleets. Only sailors that are residents of the state of Connecticut will be eligible for perpetual trophies. Morgan Point Trophy is top in red fleet, Captain's Cove Trophy is top in blue fleet, Faulkner Island Trophy is top in white fleet. In addition, the top finishing Connecticut Sailor will be awarded the CT State Optimist Championship Trophy. The top girl finisher overall will be recognized.

## COURSE W

Mark Rounding Order:

Start – 1 – 2 – Finish



## COURSE T

Start – 1 – 2 – 3 - Finish

