

# **2017 J/24 North American Championship**

***May 25 to 28, 2017***

## **Notice of Race**

The Organizing Authority (OA) comprised of the Houston Yacht Club, United States J/24 Class, and USA J/24 District 14 in conjunction with the International J/24 Class Association (IJCA) invite J/24 sailors to the:

**2017 North American Championship Regatta**  
to be held May 25 - 28, 2017 in Shoreacres, Texas, USA

### **1. Rules**

- 1.1 The regatta will be governed by the rules as defined in the Racing Rules of Sailing (RRS).
- 1.2 The following are the only prescriptions of US SAILING that will apply: the prescription to RRS 61.4 (no fees for protests), Appendix R in entirety (appeal procedures), the prescription to RRS67 (results of jury are not liability decisions), The prescription to RRS 70.5(a) (US Sailing's right to approve whether jury decisions may be appealed), and the prescription to RRS 76.1 (non-discrimination).
- 1.3 The Regatta Regulations of the International J/24 Class Association (IJCA) will apply.
- 1.4 RRS 41, 44.3(a), 61.1(a), and 49.2 will be changed as follows:
  - (a) RRS 41: From the time a boat leaves her mooring for the first race of each day until she returns to her mooring and while not racing, she shall not receive outside help except as permitted by RRS 41 from any outside source except other competitors and official boats under the direction of the organizing authority. While racing, RRS 41 applies without modification. If RC displays Race Signal AP over H, these additions to RRS 41 are suspended until a boat leaves her mooring again. This will change the preamble to Part 4 of the RRS.
  - (b) RRS 44.3(a) is changed so that the yellow flag (code flag "I" is acceptable) used by a boat taking a scoring penalty shall have a hoist of not less than 150mm and a fly of not less than 200mm.
  - (c) RRS 61.1(a) is changed so that the red flag displayed by a protesting boat shall have a hoist of not less than 150mm and a fly of not less than 200mm.
  - (d) RRS 49.2 is changed to IJCA Rule C.2: While seated on the deck, crew shall have their torsos inboard of the lifelines and the sheerline at all times. Legs may be outboard of the sheerline.
- 1.5 Bow numbers will be assigned to each boat and will be used as identification for the boat during the regatta. Bow numbers shall be applied in accordance with the instructions supplied and shall remain affixed until after a boat hauls out at the end of the regatta.

- 1.6 In accordance with RRS G3, a boat chartered or loaned for this event may carry national letters or a sail number in contravention of the class rules.
- 1.7 If there is a conflict between languages, the English text will take precedence.
- 1.8 Part 5, Section B of the RRS is changed to permit Protest Arbitration.
- 1.9 Class rule C.2.1(b) will be replaced in the Sailing Instructions with class rule J.4.3 that allows limited crew substitutions.

**2. Advertising:**

- 2.1 Competitor advertising shall comply with RRS 80. Boats may be required to display advertising chosen and supplied by the Organizing Authority (See World Sailing Regulation 20).

**3. Eligibility and Entry:**

- 3.1 The North American Championship is open to J/24 Class boats as defined by the IJCA Rules, and whose entries are accepted by the organizing authority.
- 3.2 Championship helmspersons must be either nationals or residents and members of the National J/24 Class Association of the country that they represent.
- 3.3 Eligible boats may enter by completing the online registration process at on [www.j24na.com](http://www.j24na.com) and paying the required fees by April 23, 2017.
- 3.4 Late entries will be accepted until May 23, 2017 with a 100\$ late fee.
- 3.5 If there are co-skippers, one of them shall be designated as the primary skipper for this regatta.

**4. Fees:**

- 4.1 The required entry fee is US \$400.
- 4.2 Fee includes measurement, launching, hauling, storage/mooring while at the regatta, racing, scheduled social functions for all crew, prizes.
- 4.3 Additional individual social function passes may be purchased at registration for an additional fee.
- 4.4 All fees are payable by credit card or club charge during the online entry process at [www.j24na.com](http://www.j24na.com).

## 5. Schedule:

### 5.1

Day	Date	Time	Event/Activity
Wednesday	24 May	0900 - 1800	Registration/Measurement/Crew Weigh-in
Thursday	25 May	0900 – 2000 1700 1800 2000	Registration/Measurement/ Crew Weigh-in Practice Race All Boats Afloat Competitors Meeting
Friday	26 May	0800 – 0830 1100 1900	Crew Weigh-in* Warning for First Race of the Day Social Event
Saturday	27 May	0800 – 0830 1100 1900	Crew Weigh-in* Warning for First Race of the Day Social Event
Sunday	28 May	0800 – 0830 1100 1900	Crew Weigh-in* Warning for First Race of the Day Social Event

\* These scheduled crew weigh-ins are only for approved replacement crews per NOR 1.9.

5.2 Ten races are scheduled over three consecutive days.

5.3 Four races are scheduled per day Friday and Saturday. Two races are scheduled for Sunday. One extra race per day may be sailed provided that the regatta does not become more than one race ahead of schedule and the change is made according to the provisions of the Sailing Instructions. If the regatta is behind schedule, extra races to a maximum of five races may be sailed in a single day.

## 6. Registration and Measurement:

6.1 At registration each boat shall present:

- (a) A valid, IJCA issued Measurement Certificate, Including Part C: Inventory of Required and Optional Equipment.
- (b) Proof of current marine liability insurance coverage in the amount of US \$300,000.
- (c) Proof of J/24 Class Association membership in the country they represent for the owner and the helmsperson.

6.2 All competitors will be weighed during registration. Competitors must have a passport or other photo identification at weigh-in.

6.3 Inspection and measurement will be carried out on all boats for compliance with class rule C.9.7 (forestay length), class rule C.6.1(a) (all up weight of 1330kg.), and on sails for compliance with class rules C.10.

6.4 Boats will be subject to inspection at any time during the regatta.

6.5 Boats that do not have a valid, IJCA issued Measurement Certificate must make arrangements to have their boat measured prior to the regatta. No first time or full measurement will be available during the scheduled regatta measurement time.

**7. Sailing Instructions:**

7.1 The preliminary Sailing Instructions will be available after May 17, 2017 at [www.houstonyachtclub.com](http://www.houstonyachtclub.com) and final Sailing Instructions will be available at registration.

**8. Venue:**

8.1 The 2017 J/24 North American Championship will be held at the Houston Yacht Club, located at 3620 Miramar Drive, Shoreacres, Texas 77571 USA

Attachment A shows the location of the Houston Yacht Club and the racing area.

Directions are also available on the club's website at: [www.houstonyachtclub.com/Contact.aspx](http://www.houstonyachtclub.com/Contact.aspx)

**9. The Courses:**

9.1 The courses to be sailed will be windward/leeward with 4 or 5 legs.

9.2 The target time for each race is approximately 70 – 90 minutes.

9.3 An offset mark at the weather mark will be used.

9.4 A gate at the leeward mark will be used.

**10. Penalty System:**

10.1 The Scoring Penalty, RRS 44.3, will apply, with penalties as modified by the IJCA. See J/24 Scoring Penalties on the Class website, <http://www.j24class.org> Class Documents. These modifications will be printed in the Sailing Instructions.

10.2 An International Jury will be appointed, according to RRS 70.5, whose decisions will be final.

10.3 Arbitration may be used prior to the protest hearing for incidents involving the rules of Part 2 or RRS 31.

10.4 Some other penalties as per RRS 64.1 will apply for breaking some IJCA rules. See Appendix A of this NOR.

**11. Scoring:**

11.1 Four races are required to be completed to constitute a championship.

11.2 When fewer than five races have been completed, a boat's series score will be the total of her race scores. When five or more races have been completed, a boat's series score will be the total of her race scores, excluding her worst score. This changes RRS A2.

11.3 Boats failing to finish within 15 minutes after the first boat sails the course and finishes will be scored Time Limit Expired (TLE) without a hearing. Boats scored TLE will be scored points equal to the number of boats finishing within the time limit plus two points by the race committee. RRS A4.2, A5 and A11 are changed accordingly.

**12. Support Boats:**

12.1 Support boats shall comply with NOR 1.4(a).

- 12.2 Support boats shall register during scheduled registration, declaring to which boat or boats they are attached. They may be required to display an identification flag supplied by the organizing authority.

**13. Berthing:**

- 13.1. Moorings are included in the entry fee and are available at/from the Houston Yacht Club. Competitors are advised to bring sufficient dock lines and fenders and may be required to raft.
- 13.2. Boats intending to arrive at Houston Yacht Club prior to May 20 or stay beyond May 30 must make arrangements with the Houston Yacht Club Harbormaster.
- 13.3. All boats shall be kept in the assigned area in the harbor.

**14. Haul-out Restrictions:**

- 14.1 Boats shall be afloat by May 25, 2017 at 1800 hr. and shall not be hauled out during the regatta except with, and according to the terms of prior written permission of the jury. Rudders shall remain affixed in the water.

**15. Diving Equipment, Plastic Pools and Other Prohibited Actions:**

- 15.1 Underwater breathing apparatus and plastic pools or their equivalent shall not be used between the time the boat is afloat and the end of the regatta. The hull may be cleaned at any time by swimming or keelhauling using ropes, cloth or other equipment designed for that use.
- 15.2 Careening by any means for the purpose of cleaning or inspecting the hull is prohibited during the regatta.

**16. Radio Communications:**

- 16.1 Except in an emergency, a boat shall neither make radio transmissions while racing nor receive radio communications not available to all boats. This restriction also applies to mobile telephones.
- 16.2 The race committee may choose to make VHF radio communications to the fleet on a channel to be announced in the sailing instructions. It is strongly encouraged that each boat have a VHF radio on board capable of receiving these communications.

**17. Prizes:**

- 17.1 Prizes will be awarded to the top five boats.
- 17.2 The top-finishing, not previously qualified primary helmsperson who is a current member of any NJCA as recognized by the International J/24 Class and meets all other eligibility requirements will earn a berth to the 2018 J/24 World Championship. This berth is allocated by the International J/24 Class and is available to sailors from any country.
- 17.3 Prizes will be awarded to the top Female and Master finishers.

**18. Disclaimer of Liability:**

- 18.1 Competitors participate in the regatta entirely at their own risk. See RRS 4, Decision to Race. The organizing authority will not accept any liability for material damage or personal injury or death sustained in conjunction with or prior to, during or after the regatta.

18.2 All competitors will be required to sign a Competitor Liability Waiver form to be provided in the registration package.

**19. Media Rights:**

19.1 Competitors give absolute right and permission to the IJCA, the US J/24 Class Association, District 14, the Houston Yacht Club, and the event sponsors to use, publish, broadcast or otherwise distribute for promotional, advertising or any other purpose, any images and sound recorded during the event of persons and boats free of any charge.

**20. Further Information, contact the following:**

Class Regatta Chair: Bob Harden email [bob.harden@rwharden.com](mailto:bob.harden@rwharden.com)

HYC Regatta Chair: Sandra Baldrige email [srbaldrige10@gmail.com](mailto:srbaldrige10@gmail.com)

## NOR Appendix A

### Alternative Penalties for Breaking Some Class Rules

Alternative scoring penalties shall apply for breaking certain class rules. All of these scoring penalties shall be calculated as follows, modifying RRS 44.3(c):

The race score for a boat that takes a scoring penalty for infringement of one of the following class rules shall be the score she would have received without that penalty, made worse by the penalty number. The penalty number shall be calculated by applying the scoring penalty percentage shown for the particular rule against the number of boats entered and rounding to the nearest tenth of a point (rounding 0.05 upward). However, she shall not be scored worse than Did Not Finish. The scores of other boats shall not be changed by application of these penalties.

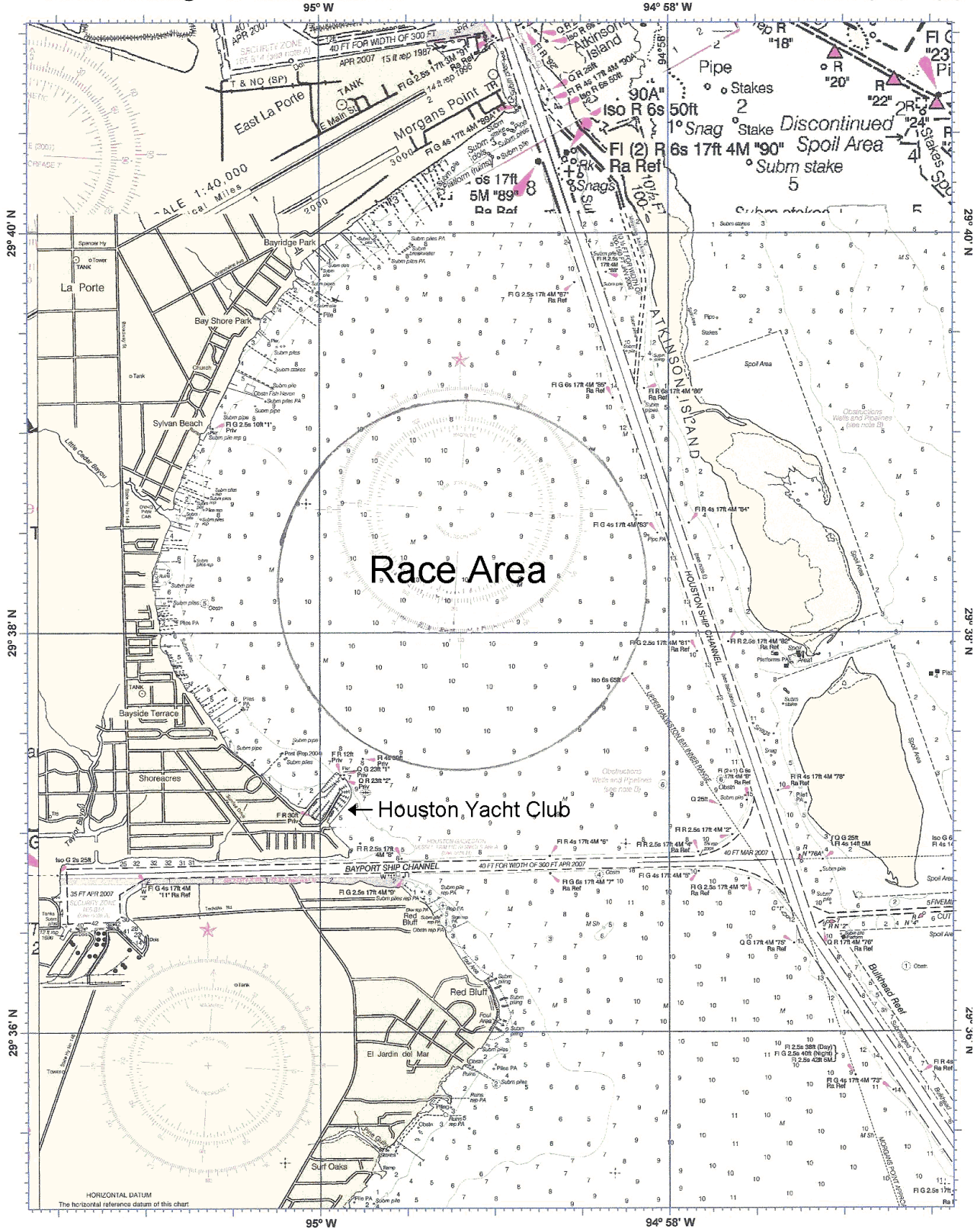
<b>Class Rule</b>	<b>Infringement</b>	<b>Scoring Penalty</b>
B.3	Complete Measurement Certificate, including the Inventory of Required and Optional Equipment is not on board	20%
C.4	Advertising does not conform to World Sailing (Reg 20) standards	20%
C.9.4 & C.9.5	Mainsail is set outside of the limit marks	20%
C.5.1(a)(1)	Bailing bucket (9 liter min. with lanyard) is not on board	20%
C.7.2(a)(9)	Approved compass device is not present or not functional	20%
C.5.1(a)(4)	Throwable lifesaving device with attached sea anchor is not on deck, ready for use	20%
C.5.1(a)(5)	First aid kit is not on board	20%
C.5.1(b)(1) C.5.1(a)(2) C.5.2(a)(10)	Any of anchors(s), outboard motor/engine, battery or engine fuel container(s) are not in their proper location and secured against movement	20%
C.7.3(a)(11)	Elastic (shock) cord is used in the standing or running rigging where it is not specifically allowed	20%
C.5.3	Stowage of equipment other than unbagged sails on the cabin sole	20%
	Removal of the rudder from the water when the Sailing Instructions stipulate that the boat shall remain afloat for the duration of the regatta	20%

If a boat receives one of the above penalties, the protest decision shall include whether the same penalty can or will be applied to subsequent infringements. The protest decision may also specify that the boat cannot be protested again under the same class rule for a time period specified by the jury. The jury will decide to which race(s) the penalty shall apply.

# NOR Attachment A Map of Racing Area

Cht. 11327 1 Shown @ - - - Houston Y C Race Area  
95° W

Produced by Capn Voyager



Edition Date 04/01/2007 . . .