



# Thanksgiving Regatta

Nov 30 – Dec 1, 2013

Organizing Authority - Davis Island Yacht Club

## Sailing Instructions

### 1 RULES

The regatta will be governed by the *rules* as defined in *The Racing Rules of Sailing*.

### 2 NOTICES TO COMPETITORS

Notices to competitors will be posted on the official notice board located on the west exterior wall on the lower level of the Clubhouse.

### 3 CHANGES TO SAILING INSTRUCTIONS

Any change to the sailing instructions will be posted before 0830 on the day it will take effect, except that any change to the schedule of races will be posted by 2000 on the day before it will take effect.

### 4 SIGNALS MADE ASHORE

- 4.1 Signals made ashore will be displayed from the flagpole at the west end of the property.
- 4.2 When flag AP is displayed ashore, '1 minute' is replaced by 'not less than 45 minutes' in the race signal. This changes Race Signal AP.

### 5 RACING AREA

The racing areas are shown in Attachment I.

### 6 SCHEDULE OF RACES

Day	Time	
Sat	1030	First Warning - Optimist
	1100	First Warning – All other boats
Sun	0930	First Warning – All boats
	1400	No Warning after this time

### 7 CLASS FLAGS

The class flags are described in Attachment I.

### 8 THE COURSES

- 8.1 The diagrams in Attachment II show the courses, including the approximate angles between legs and the order in which marks are to be passed.
- 8.2 No later than the warning signal, the race committee signal boat will display the course designation on a white board.

### 9 MARKS

Marks are described in Attachment I.

### 10 THE START

- 10.1 The starting line will be between a staff displaying an orange flag on the race committee signal boat at the starboard end and the course side of a port end starting mark.
- 10.2 Boats whose warning signal has not been made shall avoid the starting area during the starting sequence for other classes.

### 11 RECALLS

The race committee will NOT hail the sail numbers of OCS boats after the starting signal.

### 12 CHANGE OF THE NEXT LEG OF THE COURSE

To change the next leg of the course, the race committee will move the original mark (or the finishing line) to a new position.

### 13 THE FINISH

The finishing line will be between a staff displaying an orange flag on a race committee boat and the course side of the finishing mark.

### 14 TIME LIMITS

- 14.1 The time limit for the first boat in each race is 60 minutes for Opti, Laser, 420s and multihulls. The time limit for all other boats is 90 minutes.
- 14.2 Boats still racing more than 20 minutes after the first boat sails the course and finishes will be scored TLE, 2 points more than the last finisher. This changes RRS 35, A4, A5 and A11.

### 15 PROTESTS AND REQUESTS FOR REDRESS

- 15.1 Add to RRS 61.1(a) "The protesting boat shall inform the Race Committee of the boat(s) being protested at the finishing line immediately after finishing."
- 15.2 Protest forms are available at the Regatta Room. Protests shall be delivered there within 60 minutes after the race committee finish boat docks. The docking time will be posted on the Official Notice Board.

- 15.3 Notices will be posted within 15 minutes after the protest time limit to inform competitors of hearings in which they are parties or named as witnesses. Protests will be heard in the approximate order of receipt in the Regatta Room.
- 15.4 Violations of Sailing Instructions 10.2, 17.1, 17.2, 17.3 17.4 18.1, 18.2 are not protestable by another boat and may result in any penalty the jury deems appropriate, up to, and including disqualification.

## **16 SCORING**

- 16.1 For the racing circles with “multihulls” and “other monohulls” five or more like boats will be given a separate start and scored as a fleet. Other boats will be started together and scored using the Portsmouth rating system.
- 16.2 It is the intention of the race committee to conduct as many races as practical each day. One race for a class or fleet must be completed to constitute a regatta for that class or fleet.
- 16.3 The worst score will be excluded with the completion of five (5) or more races.

## **17 SAFETY REGULATIONS**

- 17.1 **Optimist and 420 competitors:**
- 17.1.1 Each morning prior to sailing, every competitor must go to the Regatta Room on the ground level of the DIYC club house and sign next to their name. Failure to comply will result in a 20% penalty for the first race they compete in that day, but not worse than DNF.
- 17.1.2 Upon returning to shore after sailing, every competitor must go to the Regatta Room on the ground level of the DIYC club house and sign next to their name. Failure to comply will result in a 20% penalty for the last race they compete in that day, but not worse than DNF. The time limit for check-in upon returning to shore is 60 minutes after the race committee finish boat docks.

- 17.2 Prior to the warning signal for the first race each day, each boat shall sail on *starboard* tack past the stern of the race committee signal boat, and hail her sail identification number until acknowledged by the race committee.
- 17.3 A boat retiring from a race or leaving the course before racing for the day is completed, shall notify the race committee before leaving the course, or when that is impossible, an official at the Davis Island Yacht Club immediately after arrival ashore. Boats failing to do so may be protested by the race committee, and may result in disqualification of a boat from the day's racing.
- 17.4 All Opti, Laser and 420 competitors are required to wear a PFD at all times while on the water (except while effecting a change of clothing or personal gear). Flag Y will not be flown.

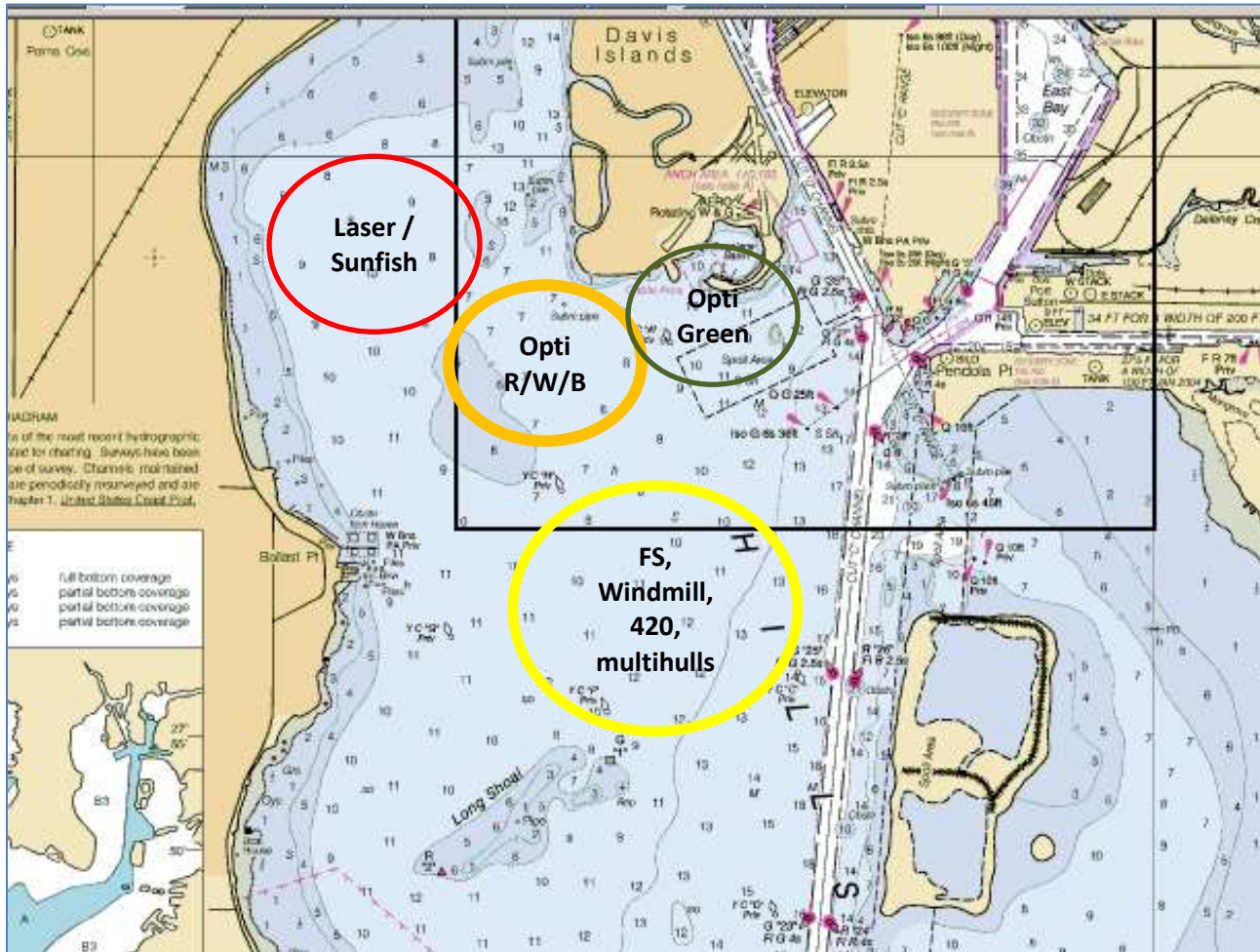
## **18 SUPPORT BOATS**

- 18.1 Except for Opti Green, team leaders, coaches and other support personnel shall stay outside areas where boats are racing from the time of the preparatory signal for the first start until all boats have finished or retired or the race committee signals a postponement or abandonment.
- 18.2 Coaching of Opti Green fleet competitors while racing is permitted, however coaching shall be limited to skippers in the bottom half of the fleet in any given race. Coach boats shall neither create wakes nor otherwise interfere with competitors. Coaches shall provide fair and consistent support to all competitors, not just their team or sailor. Violation of this instruction may result in any penalty that the jury deems appropriate, up to, and including the disqualification of the coached skipper from the regatta.

## **19 DISCLAIMER OF LIABILITY**

Competitors participate in the regatta entirely at their own risk. See RRS 4, Decision to Race. The organizing authority will not accept any liability for material damage or personal injury or death sustained in conjunction with or prior to, during, or after the regatta.

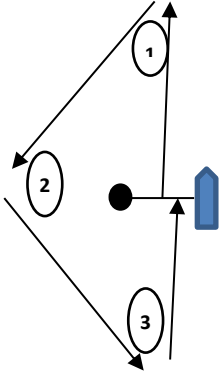
## Attachment I – Sailing Areas, Mark Description, Class Flags



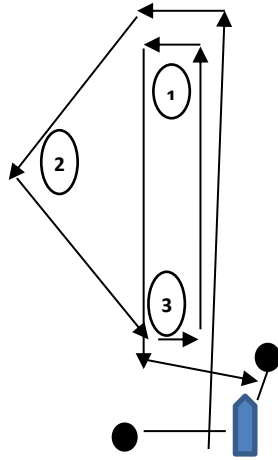
Course	VHF Channel	Mark Descriptions	Class Flags
Opti Green	5	Weather, Leeward - Green tetrahedrons Jibe, Start/finish – Orange Balls	Opti Green - White G on Green background
Opti R/W/B	69	Weather, Jibe, Leeward – Yellow West Marine balls Start/Finish – Orange Balls	Opti R/W/B - Opti symbol on white background
Laser / Sunfish	71	Weather, leeward – Orange tetrahedrons Start, finish – Orange Balls	Laser Full – Red Laser on white background Laser Radial – Red Laser on yellow background Laser 4.7 – Red Laser on green background Sunfish – Sunfish on white background
Flying Scot, Windmill, 420, mutihulls	72	Short Weather mark – Red Tetrahedron Long Weather mark – Yellow Tetrahedron Leeward marks – Yellow tetrahedrons Start/Finish – Orange Balls Offset – Orange Ball <b>NOTE – if one there is only one leeward mark it shall be rounded to port.</b>	Flying Scot – FS on white Windmill – Windmill symbol on white 420 – 420 on white Others monohulls – White P on purple Multihulls – White T on yellow background

**Attachment II – Possible Courses**

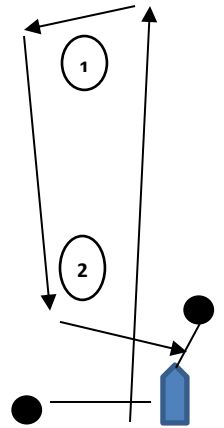
**Course T (start, 1P, 2P, 3P, finish)**



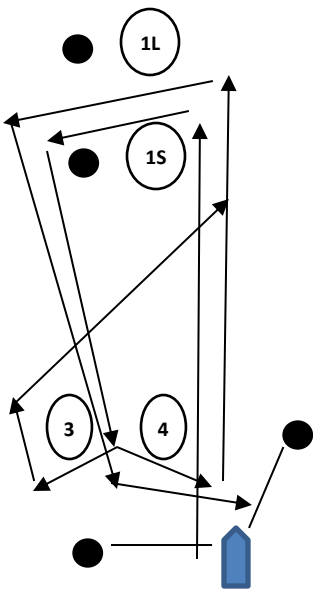
**Course O – (start, 1P, 2P, 3P, 1P, 3P, finish)**



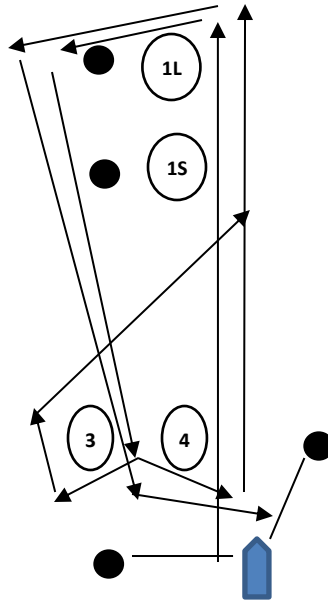
**Course W1 – (start, 1P, 2P, finish)**



**Course W2 S (start, 1S to port , offset port, between 3 and 4, 1S to port, offset port, between 3 and 4, finish)**



**Course W2 L (start, 1L to port , offset port, between 3 and 4, 1L to port, offset port, between 3 and 4, finish)**



**Course W2 – (start, 1P, 2P, 1P, 2P, finish)**

