



## J/24 Midwinter Championship

February 20-22, 2015

J/24 District 10, Fleet 86, Tampa, Florida

### Sailing Instructions

#### 1 RULES

- 1.1 The regatta will be governed by the *rules* as defined in *The Racing Rules of Sailing* (RRS).
- 1.2 No member of the crew shall station any part of his/her torso outside the upper lifeline other than temporarily. This modifies RRS 49.
- 1.3 RRS 41 will be changed as follows: From the time a boat leaves her mooring for the first race of each day until she returns to her mooring, she shall not receive outside help except as permitted by RRS 41 from any outside source except other competitors and official boats under the direction of the organizing authority. While racing, RRS 41 applies without modification. If the RC displays Race Signal AP over H, or N over H, these additions to RRS 41 are suspended until a boat leaves her mooring again. This also changes the preamble to Part 4 of the RRS.
- 1.4 RRS 42.3 (b) and (c) will be replaced by IJCA Rule 8.2.
- 1.5 The US Sailing prescriptions to RRS 60, 63.2 and 63.4 are deleted.

#### 2 NOTICES TO COMPETITORS

- 2.1 Notices to competitors will be posted on the regatta notice board located on the West exterior wall on the lower level of the Clubhouse.
- 2.2 The race committee will use VHF channel 78 to communicate with competitors on the water.

#### 3 CHANGES IN SAILING INSTRUCTIONS

Any change will be posted before 0800 hours on the day it will take effect, except that any change in the schedule of races will be posted before 2000 hours the day before the change is to take effect.

#### 4 SIGNALS MADE ASHORE

- 4.1 Signals made ashore will be displayed from the flagpole at the West end of the property.
- 4.2 When flag AP is displayed ashore, '1 minute' is replaced by 'not less than 45 minutes' in the race signal AP.

#### 5 CLASS FLAG

The class flag will be a white flag with the J/24 insignia.

#### 6 RACING AREA

The racing area will be on Hillsborough Bay approximately 1-2 miles south of the Clubhouse, as shown in Attachment I.

#### 7 SCHEDULE OF RACES

Friday - Sunday, Feb. 20-22

- 1000 First scheduled Warning signal, subsequent races to follow.
- No warning after 1500 on Sunday.

#### 8 THE COURSES

- 8.1 The diagrams and descriptions in Attachment II show the courses, including the approximate angles between legs and the order in which marks are to be passed.
- 8.2 If only one leeward mark is present it shall be rounded to port.
- 8.3 The course identifier, approximate magnetic bearing and distance in nautical miles to the first mark will be displayed from the race committee signal boat prior to the warning signal for each race.

An example is shown below:

5	Five legs, finishing to windward
270	Approx magnetic bearing to windward mark
1.2	1.2 nm to windward mark

## **9 MARKS**

- 9.1 Windward and leeward marks will be yellow tetrahedrons.
- 9.2 The offset mark will be a small orange ball.
- 9.3 The starting and finishing marks will be either race committee vessels or green tetrahedrons.
- 9.4 New marks, as provided in SI 12, will be orange tetrahedrons.

## **10 THE START**

The starting line will be between a staff displaying an orange flag on the race committee signal boat at the starboard end and either (a) the course side of the starting mark or (b) a staff displaying an orange flag on a boat at the port end.

## **11 RECALLS**

- 11.1 When an individual recall is signaled, the race committee will attempt to hail OCS boats on VHF Channel 78.
- 11.2 The timing or order of such hails, or the failure of a boat to hear the hail, shall not be considered an improper action or omission of the race committee under RRS 62.1.

## **12 CHANGE OF THE NEXT LEG OF THE COURSE**

To change the next leg, the race committee will lay a new mark (or move the finishing line) and remove the old mark as soon as practicable. When in a subsequent change a new mark is replaced, it will be replaced by an original mark.

## **13 THE FINISH**

- 13.1 The finishing line will be between a staff displaying an orange flag on a race committee boat and the course side of the finishing mark.
- 13.2 If code flag A is displayed without a sound signal at the finish of any race it indicates racing is concluded for the day.

## **14 TIME LIMITS**

- 14.1 The time limit for the first boat to sail the course and finish is 120 minutes.
- 14.2 Boats still racing more than 30 minutes after the first boat sails the course and finishes will be scored TLE (Time Limit Expired). See SI 17.3. This changes RRS 35, A5, and A11.

## **15 PENALTY SYSTEM**

- 15.1 RRS 44.2 and part of 44.1 (turns penalties) are not in effect for this regatta. The Scoring Penalty, RRS 44.3, will apply, with penalties as modified by the ICA in Appendix III. RRS 44.1(a) and 44.1(b) remain in effect.
- 15.2 The red flag displayed by a protesting boat shall have a hoist of not less than 150 mm and a fly of not less than 200 mm. This changes RRS 61.1 (a).
- 15.3 RRS 44.3 is changed so that flag "I" may be used as the yellow flag and so that the flag used (either yellow or flag "I") shall have a hoist of not less than 150mm and a fly of not less than 200mm.
- 15.4 In RRS 44.3(c), change "20%" to "the percent in Attachment III or IV that best suits her situation."
- 15.5 The reporting requirements of RRS 44.3(b) may be satisfied by contacting the Race Committee by VHF radio on channel 78. Additionally, a boat accepting a Scoring Penalty shall file a "Scoring Penalty Acceptance Form". The Race Committee will post a list of boats that have properly accepted a Scoring Penalty on the Official Notice Board.
- 15.6 After Race Scoring Penalties (see Attachment III) may be taken by filing a "Scoring Penalty Acceptance Form", available in the Regatta Room prior to the start of a hearing involving the incident. Timing of the filing, either within or after the protest time limit, will affect the penalty as shown in Attachment III.
- 15.7 Arbitration may be used prior to the protest hearing for incidents involving the rules of Part 2 or RRS 31 and not more than two boats. Penalties accepted in arbitration shall be as shown in Attachment III.
- 15.8 Alternative scoring penalties shall apply for breaking certain class rules. See Attachment IV. This changes RRS 63.1 and A5.

## **16 PROTESTS AND REQUESTS FOR REDRESS**

- 16.1 Protest forms are available in the Regatta Room. Protests shall be delivered there within the protest time limit which is 60 minutes after the race committee finish boat docks after the last race of the day.
- 16.2 The race committee will post a list of penalties being assigned by the race committee prior to the end of protest time limit. The deadline for requesting redress based on these scores will be either 30 minutes after posting of the penalty notice or the protest time limit, whichever is later. This changes RRS 62.2.

16.3 Notices will be posted promptly after the receipt of a protest or a request for redress to inform competitors of hearings in which they are parties or named as witnesses. Hearings will be held in the Regatta Room in approximately the order of receipt beginning as soon as possible after their receipt.

16.4 On the last day of the regatta a request for reopening a hearing shall be delivered (a) within the protest time limit if the party requesting reopening was informed of the decision on the previous day; (b) no later than 30 minutes after the party requesting reopening was informed of the decision on that day. This changes RRS 66.

16.5 On the last day of the regatta a request for redress based on a jury decision shall be delivered no later than 30 minutes after the decision was posted, changing RRS 62.2.

## **17 SCORING**

17.1 Ten races are scheduled. Three races are required to be completed to constitute a series.

17.2 When fewer than five races have been completed a boat's series score will be the total of her race scores. When five or more races have been completed, a boat's series score will be the total of her race scores excluding her worst non-excludable score.

17.3 Boats scored TLE will be scored points equal to the number of boats finishing within the time limit plus two points.

## **18 SAFETY**

18.1 Prior to the warning signal for the first race of each day in which it intends to compete, each boat is requested to check in by VHF or sail by the race committee signal boat and hail its sail number.

18.2 A boat retiring from a race or leaving the racing area early shall promptly notify the race committee either by hail, over VHF, or by telephone to the Clubhouse at (813) 251-1158.

## **19 REPLACEMENT OF CREW OR EQUIPMENT**

19.1 With permission, IJCA rule 5.3 is changed to permit a boat to sail with different crew on different days provided the crew changes are declared at registration.

19.2 Crew changes not declared at registration will be allowed only with prior written approval of the race committee.

a. Unless the race committee specifies otherwise, any substitution permitted will be for 24 hours only.

b. The number of crew shall not change during the regatta.

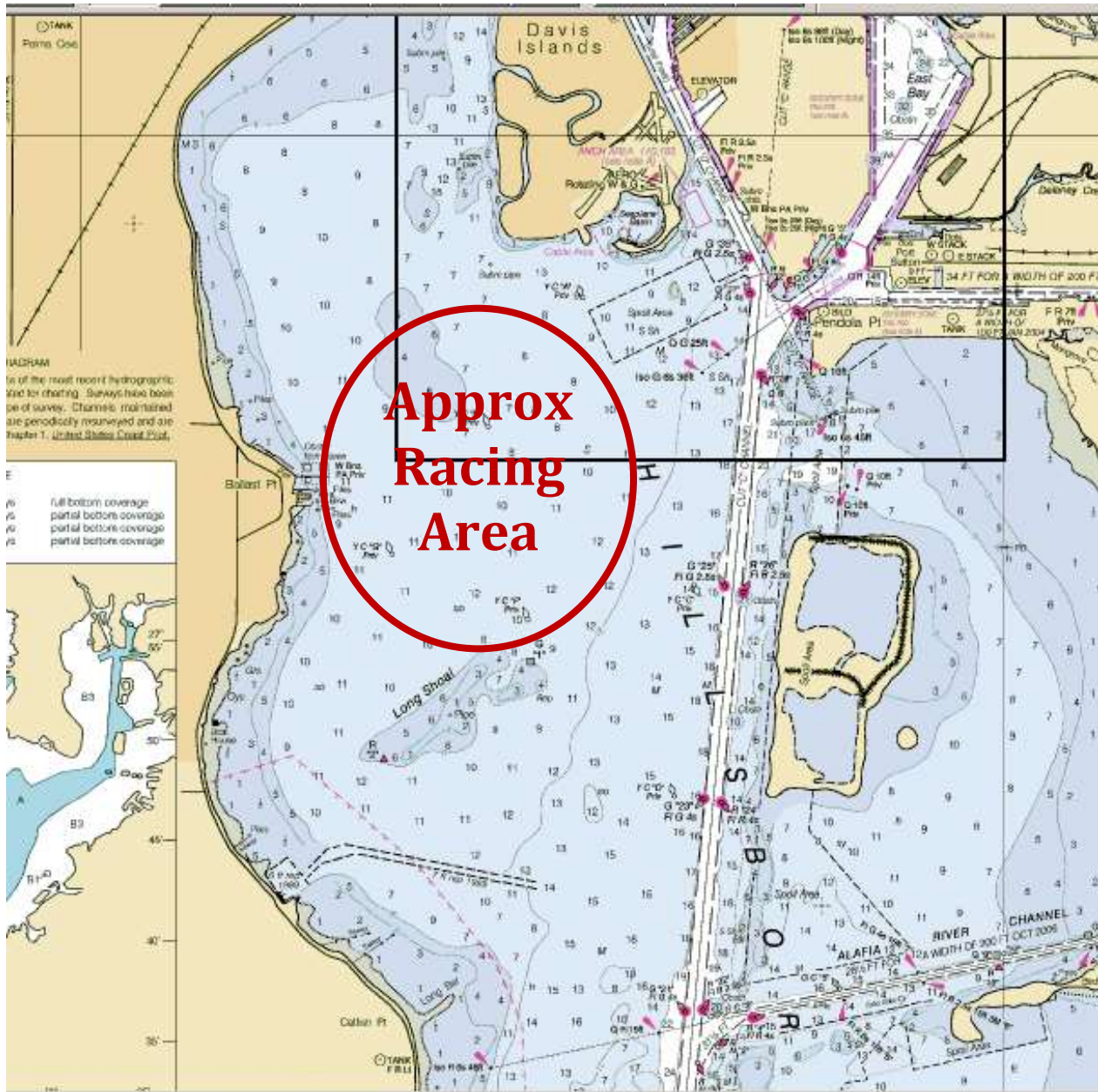
19.3 Substitution of damaged or lost equipment will not be allowed unless approved by the race committee.

19.4 Requests for replacement of crew or equipment and any reply shall be posted on the regatta notice board.

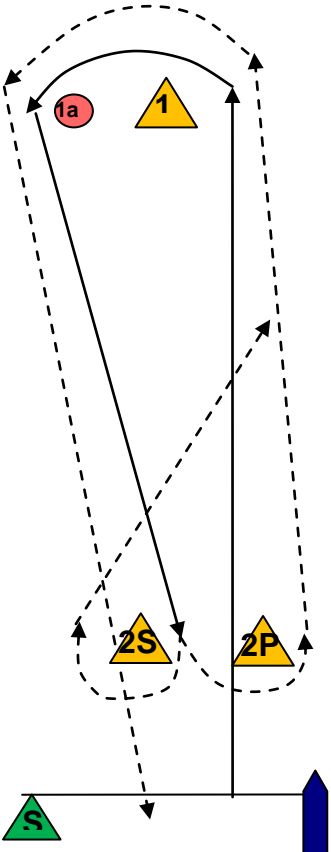
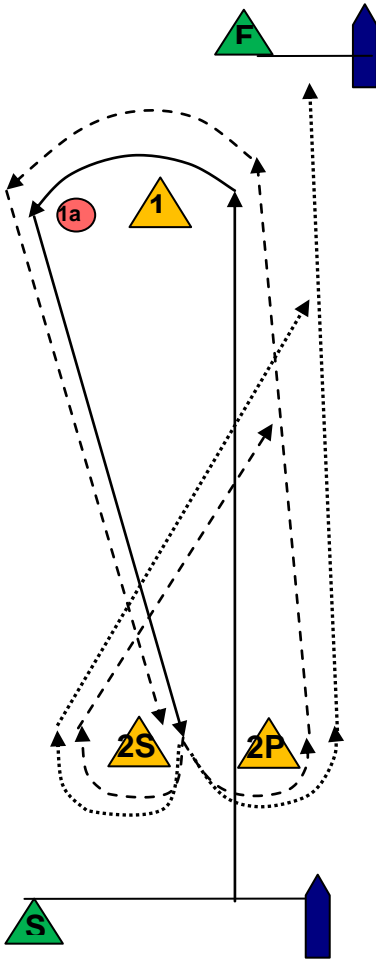
## **20 RADIO EQUIPMENT**

A boat shall neither make nor receive radio, phone or other electronic transmissions while racing except in an emergency or as permitted by SI 2.2 . This changes RRS 41(c)

# Attachment I – Approximate Racing Area



## Attachment II – Sample Course Diagrams

Course 4		Course 5
 <p>The diagram for Course 4 shows a track layout with a start line 'S' (green triangle) and a finish line (blue arrow) at the bottom. A dashed line indicates a path starting from 'S', going up to point '1a' (red circle), then to point '1' (yellow triangle), down to point '2S' (yellow triangle), across to point '2P' (yellow triangle), up to point '1a', and finally to point '1'. A solid line path starts from 'S', goes up to point '1', down to point '2S', across to point '2P', up to point '1a', and finally to the finish line.</p>		 <p>The diagram for Course 5 shows a track layout similar to Course 4, but with a finish line 'F' (green triangle) and a blue arrow at the top right. A dashed line path starts from 'S', goes up to point '1a', then to point '1', down to point '2S', across to point '2P', up to point '1a', and finally to point '1'. A solid line path starts from 'S', goes up to point '1', down to point '2S', across to point '2P', up to point '1a', and finally to the finish line 'F'. A dotted line path starts from 'S', goes up to point '1', down to point '2S', across to point '2P', up to point '1a', and finally to the blue arrow at the top right.</p>
<p>Start, 1 (port), 1a (port), between 2S and 2P, 1(port), 1a (port), finish</p>		<p>Start, 1 (port), 1a (port), between 2S and 2P, 1(port), 1a (port), between 2S and 2P, finish</p>

## ATTACHMENT III - Penalties While Racing

<b>Action\Penalty</b>	<b>10%</b>	<b>20%</b>	<b>25%</b>	<b>30%</b>
Touching a mark	<b>X</b>			
Breach of a part 2 rule ("right of way, room")	<b>X</b>			
Breach of a part 2 rule ("right of way, room") <b>within the zone</b>		<b>X</b>		
After Race Scoring Penalty for touching a mark		<b>X</b>		
After Race Scoring Penalty for a breach of a part 2 rule ("right of way, room")		<b>X</b>		
After Race Scoring Penalty for a breach of a part 2 rule ("right of way, room") <b>within the zone</b>			<b>X</b>	
If one of the above After Race Scoring penalties is taken after the protest time limit				<b>X</b>
If taken as the result of an arbitration				<b>X</b>
<b><u>Penalties imposed by the Race Committee or Jury without a hearing: These modify RRS 63.1</u></b>				
If some, but not all requirements of a properly taken Scoring Penalty are met ( <b>Jury</b> )				<b>X</b>
Penalty for a breach of RRS 42 ( <b>Jury</b> )	<b>X</b>			

## ATTACHMENT IV - Alternative Penalties for Breaking Some Class Rules

Alternative scoring penalties shall apply for breaking certain class rules. If a boat receives one of the above penalties, the protest decision shall include whether the same penalty can or will be applied to subsequent infringements. The protest decision may also specify that the boat cannot be protested again under the same class rule for a time period specified by the jury. The jury will decide to which race(s) the penalty shall apply.

CLASS RULE	INFRINGEMENT	SCORING PENALTY
2.5.6	A copy of the Measurement Certificate and the Inventory of Required and Optional Equipment are not aboard the yacht. (One or both items)	5%
2.6	Advertising does not conform to the restrictions	5%
3.6.10 (o)	The luff and/or foot of the mainsail set outside the distinguishing bands as defined in Rules 3.5.2(d)	10%
4.1.7	A bailing bucket of minimum capacity 9 liters fitted with a lanyard is not on board.	20%
4.1.10	2 liters or more of motor fuel is not on board when the boat crossed the finish line for the last race of the day	20%
4.1.1	The compass is missing or is inoperable.	20%
4.1.4	The throwable lifesaving device and attached sea anchor not on deck and ready for use.	20%
4.1.6	The required first aid kit and manual are not on board	20%
4.3	Any of anchor(s), outboard motor, battery and fuel container is not secured against movement.	20%
7.1.19	Elastic (shock) cord is used in the standing or running rigging where not specifically allowed.	10%
8.1.2	The stowage of required or optional equipment other than unbagged sails on the cabin sole over the keel.	10%
8.1.3	Use of other than normal sailing gear in normal, designed and proper storage areas to attain sailing weight.	10%
8.3	The removal of the rudder from the water when the Sailing Instructions stipulate that the boat shall remain afloat for the duration of the regatta	10%