

2.4mR Pre World Regatta December 8 – 10, 2011

Sailing Instructions

1.0 RULES

- 1.1 The regatta will be governed by the rules as defined in the 2009-2012 Racing Rules of Sailing.
- 1.2 Rules changes in these Sailing Instructions
 - 1.2.1 When the flag AP is displayed ashore, '1 minute' is replaced with 'not less than 30 minutes' in the race signal AP.
 - 1.2.2 A boat starting later than five (5) minutes after its starting signal will be scored DNS by the Race Committee without further hearing. This changes Rules 35, A4.1, and A5.
 - 1.2.3 Boats failing to finish within 20 minutes of the first boat to finish will be scored Time Limit Expired (TLE) and will be given a score 1 points higher than the score for the last boat to finish. This changes Rule 35, A4.1, and A5.
 - 1.2.4 When six or less races are completed there will be no excluded scores. When seven or more races are completed there will be one score excluded. When 11 races have been completed, a boat's series score will be the total of her races sailed excluding her worst two scores. This changes Rule A2.

2.0 NOTICES TO COMPETITORS—Notices to competitors will be posted on the official notice board located at Charlotte Harbor Yacht Club (CHYC).

3.0 CHANGES—Any change to the Sailing Instructions will be posted before 0800 on the day it will take effect, except that any change to the schedule of the races will be posted on the official notice board at CHYC by 1800 on the day before it will take effect.

4.0 SIGNALS MADE ASHORE—When the flag AP is displayed ashore, '1 minute' is replaced with 'not less than 30 minutes' in the race signal AP.

5.0 RACING SCHEDULE

5.1			
Date		Time of First Warning	# of Races Planned
Thursday	12/08/2011	1030 hours	4 races
Friday	12/09/2011	1030 hours	4 races
Saturday	12/10/2011	1030 hours	4 races
No warning signal after 1500 hours on Saturday, 12/10/2011			

5.2 Number of Races—Twelve (12) races are planned for the regatta.

6.0 CLASS FLAG—The 2.4m Class Logo will be Blue on White and will be used as the warning signal in RRS 26.

7.0 RACING AREAS

Location of racing area is shown on **Attachment 1** to these Sailing Instructions

8.0 COURSES—Courses are shown in **Attachment 2** to these Sailing Instructions.

9.0 MARKS

9.0.1 The port-end starting mark will be an ORANGE Ball.

9.0.2 The leeward finishing mark will be an ORANGE ball.

9.0.3 The windward finishing mark if needed will be a WHITE Ball.

9.0.4 At the starting line, the race committee may attach an orange buoy to the starboard-end RC boat, at or near its stern. If so, the starboard-end starting mark will be the combination of the RC boat and the buoy. A boat that touches the RC boat or the buoy (or passes between them) breaks RRS 31.1 (Touching A Mark).

9.0.5 The course marks for Circle 1 will be RED Cones. If a small ORANGE ball offset mark is in place, it must be rounded to port.

9.0.6 New marks defining a change of course for Circle 1 will be a YELLOW Tetrahedron. A 2nd change of course with in the same race will be the original RED Cone.

10.0 STARTING AND FINISHING LINES

10.1 The starting line will be between a staff displaying an orange flag on the Race Committee signal boat on the starboard end of the line and the course side of the mark at the port end of the line.

10.2 The finishing line will be between a staff displaying an orange flag on a Race Committee boat and the course side of the finishing mark.

11.0 THE START

11.1 Each participant shall approach the RC Signal Boat on starboard tack and give its name and sail number, and receive acknowledgment from the Race Committee, for check-in before the first race of each day.

11.2 Races will be started using Rule 26 with the warning signal made 5 minutes before the starting signal. A series of sound signals may be made as a courtesy approximately 1 minute before warning signal for the start of each race.

11.3 A boat starting later than five (5) minutes after its starting signal will be scored DNS by the Race Committee without further hearing. This changes Rules 35, A4.1, and A5.

12.0 INDIVIDUAL RECALL—The Race Committee may attempt to notify the boat or boats being recalled by hailing or broadcasting the sail number and/or name. Failure of a boat to see or hear recall notification or the timing and order of such hails will not be grounds for redress.

13.0 TIME LIMIT

13.1 The time limit for the first boat to finish each race is 60 minutes.

14.0 PROTESTS AND REQUESTS FOR REDRESS

- 14.1 At the finish of the race or after withdrawal from the race, a boat lodging a protest shall inform the Race Committee of the name and sail number of the boat being protested and/or the skipper of the boat being protested.
- 14.2 Protest and redress forms are available at the Official Regatta Desk at CHYC. Completed forms must be submitted to the Official Regatta Desk Officer as soon as possible, and not later than the protest time limit for each day of racing.
- 14.3 The protest time limit is 60 minutes after the Race Committee Signal Boat docks. Docking time shall be determined by each Circle Principal Race Officer.
- 14.4 Protest notices will be posted on the Official Notice Board at CHYC as soon as possible after the protest time limit to inform the competitors the time of the hearing to which they are a party.
- 14.5 All protest hearings will be held at the designated time specified in the official protest notices in the Commodore's Lounge at Charlotte Harbor Yacht Club.

15.0 BOAT WITHDRAWAL—Any boat withdrawing from a race shall notify the Race Committee Signal Boat or Safety Boat.

16.0 RADIO COMMUNICATIONS -

- 16.1 Will be VHF 68
- 16.2 Except in an emergency, a boat shall neither make radio transmissions while racing nor receive radio communications not available to all boats. This restriction also applies to mobile telephones

17.0 SCORING

17.1 The low-point scoring system of Appendix A will apply. Three (3) races are required to be completed to constitute a regatta.

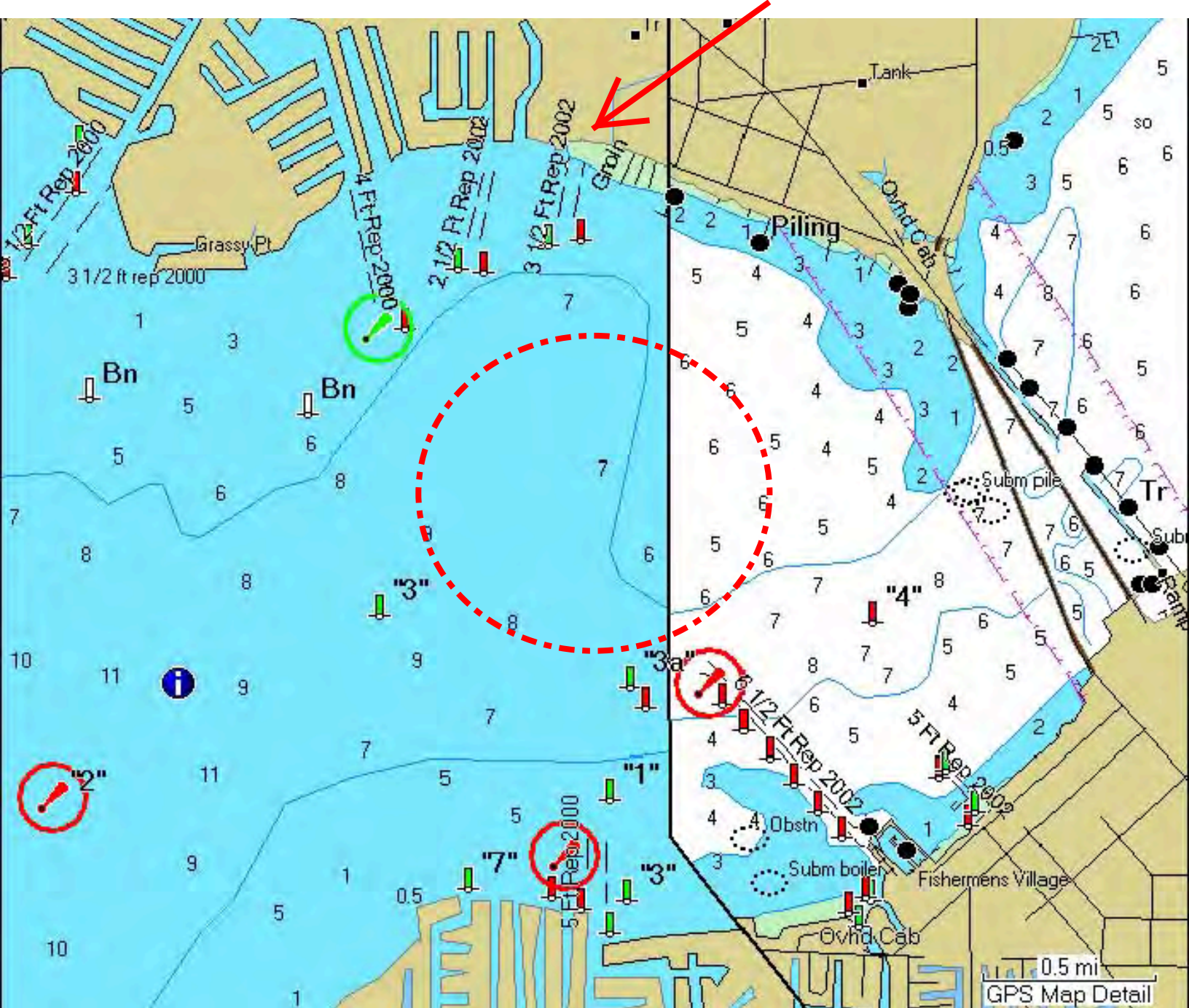
18.0 AWARDS—Awards will be presented to the first, second and third places for the series.

2.4mR Pre World Regatta Sailing Instructions

Attachment 1

Race Area

CHYC



2.4mR Pre World Regatta Sailing Instructions

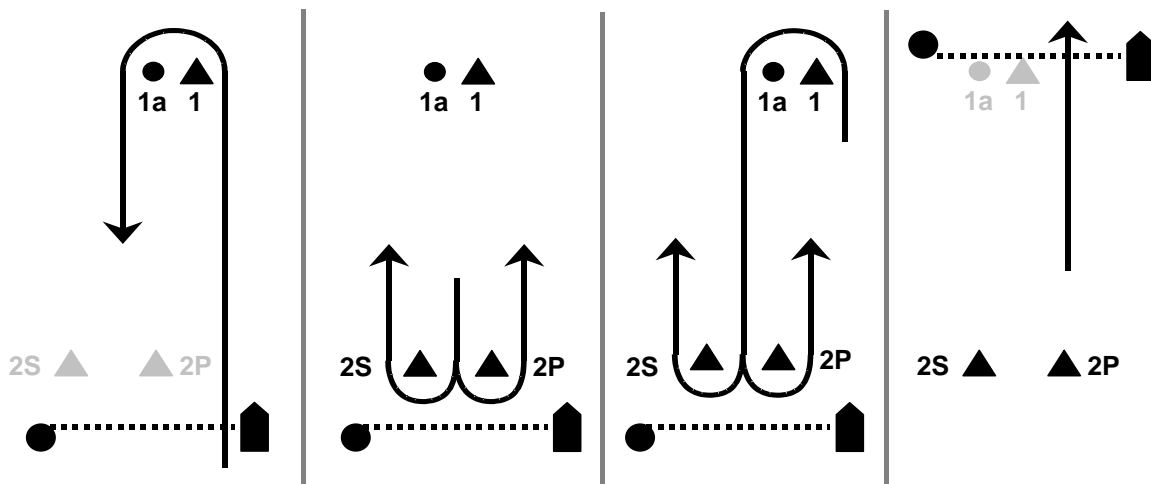
Attachment 2

Courses

Offset Mark (1a) used in conjunction with **Mark 1** will be placed at approximately a right angle to the first leg of the course and approximately 150 feet away from **Mark 1**.

Gate 2S/2P shown in each course may be substituted by a single **Mark 2**, without signaling. **Mark 2** must be left to **Port** when rounding.

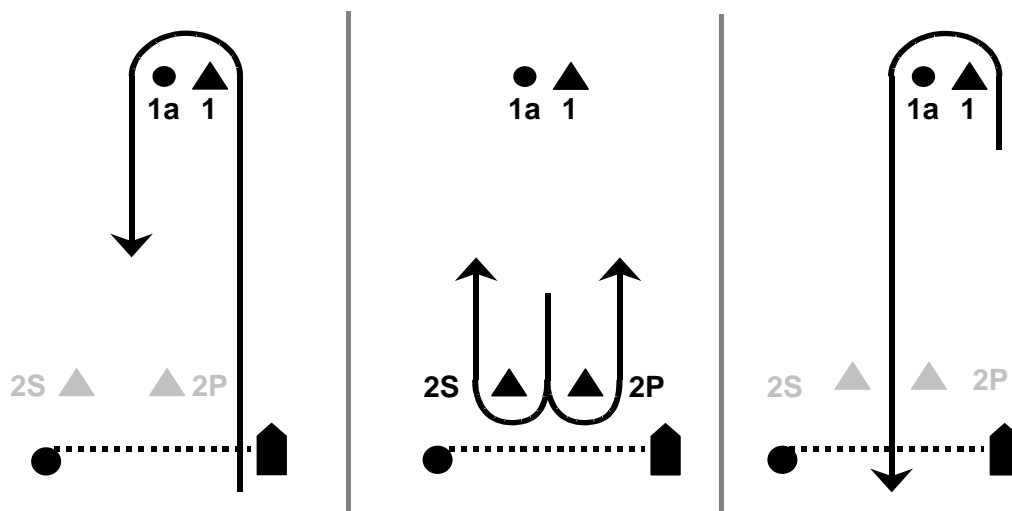
1. Course Wx



W3 Course — Start — 1 — 1a — 2S/2P — Finish Windward — Three (3) Legs

W5 Course — Start — 1 — 1a — 2S/2P — 1 — 1a — 2S/2P — Finish Windward — Five (5) Legs (Illustrated)

2. Course Lx



L2 Course — Start — 1 — 1a — Finish Leeward — Two (2) Legs

L4 Course — Start — 1 — 1a — 2S/2P — 1 — 1a — Finish Leeward — Four (4) Legs (Illustrated)