



International Association for Disabled Sailing
2012 World Championships
a qualifying regatta for the USA Paralympic Trials
January 7-15, 2012

SAILING INSTRUCTIONS

The IFDS Disabled Sailing Combined World Championships 2012 is organized under the auspices of the International Association for Disabled Sailing (IFDS). The organizing authority is Charlotte Harbor Regatta, Inc.

To be sailed in single-person, two-person and three-person boats. The event venue is Laishley Park Municipal Marina (LPMM), 120 Laishley Court, Punta Gorda, Florida, 33950 (www.laishleymarina.com).

1 RULES

1.1 The regatta will be governed by the rules as defined in *The Racing Rules of Sailing* (RRS).

1.2 The following rules shall apply:

- IFDS Functional Classification System and Procedures 2009–2012
- IFDS Race Management Manual 2009–2012 (RMM) part 1
- Sonar Class Association Class Rules
- For the Sonar Class this is an International Sonar Class Association (ISCA) Appendix B—Alternative Rules event
- SKUD 18 Class rules including Section J4
- International 2.4 mR Class Rules, including Section K Paralympic Class
- Appendix G3 of the RRS
- Appendix P of the RRS (immediate Penalties for breaking RRS 42)

1.3 Only the US SAILING prescriptions to RRS 40, 68, 76.1, 88.2 and added RRS 61.4 and 76.3 will apply and are stated in full in attachment 4.

1.4 The Equipment Rules of Sailing will apply.

1.5 If there is a conflict between languages the English text will take precedence.

2 NOTICES TO COMPETITORS

2.1 Notices to competitors will be posted on the official notice board(s) located in the Southern Pavilion at Laishley Park Municipal Marina.

3 CHANGES TO SAILING INSTRUCTIONS

3.1 Any change to the sailing instructions will be posted before 0800 on the day it will take effect, except that any change to the schedule of races will be posted by 2000 on the day before it will take effect.

4 SIGNALS MADE ASHORE

4.1 Signals made ashore will be displayed at Laishley Park Municipal Marina.

4.2 When flag AP is displayed ashore, '1 minute' is replaced with 'not less than 90 minutes' in the race signal AP. This changes RRS race signals.

4.3 Flag B hoisted with one sound signal means "Protest time has begun". When lowered with one sound signal "Protest time has ended". This changes RRS race signals.

4.4 When flag "G" is displayed ashore boats shall not leave the marina.

5 SCHEDULE OF RACES AND OTHER EVENTS

5.1 Schedule of races and other events

Sat Jan 7	Registration, Measurement of boats, and Classification of participants. IFDS Worlds Shortest Parade at LPMM IFDS Worlds Fair at LPMM Pusser's Rum Party at LPMM	0900–1700 1100-1200 1300-1600 1300-1600
Sun Jan 8	Registration, Measurement of boats, and Classification of participants.	0900–1700
Mon Jan 9	Registration, Measurement of boats, and Classification of participants. Practice Race (1 st warning) Opening Ceremony and Dinner at LPMM	0900–1200 1455 1800
Tues Jan 10	World Championship Two races Daily Awards at LPMM	Time of first warning signal 1055 After racing
Wed Jan 11	World Championship Two races Daily Awards at LPMM Gary Jobson Presentation at Isles Yacht Club	Time of first warning signal 1025 After racing 1930
Thurs Jan 12	World Championship Two Races Daily Awards at LPMM	Time of first warning signal 1025 After racing
Fri Jan 13	World Championship Two races	Time of first warning signal 1025

	Daily Awards at LPMM Pusser's Rum Party	After racing
Sat Jan 14	World Championship Two races Event Dinner and Daily Awards at Charlotte Harbor Event & Conference Center	Time of first warning signal 1025 1800
Sun Jan 15	World Championship One Race Ceremonial Prize giving and Closing	Time of first warning signal 1025 No first warning signal after 1400 After racing TBD

5.2 Eleven (11) races are scheduled in each class.

5.3 Two races in each class are scheduled on each racing day, with the exception of Sunday January 15, 2012, when one race is scheduled. Due to weather conditions, up to one extra race per day may be sailed, with no class being more than one race ahead of its schedule.

5.4 The OA and/or the RC reserve the right to modify the program due to weather conditions or other causes.

5.5 The race committee will brief the competitors each race day (Tues-Sun) morning at 0845 at LPMM.

5.6 After a long postponement, to alert boats that a race or sequence of races will begin soon, an orange flag will be displayed with one sound for at least four minutes before a warning signal is displayed.

6 CLASS FLAGS

Class flags will be:

Event	Class	Flag
Single-person keel boat	2.4mR	White flag with 2.4 class insignia or numeral pennant 1
Two-person keel boat	SKUD 18	White flag with SKUD 18 class insignia or numeral pennant 2
Three-person keel boat	Sonar	White flag with Sonar class insignia or numeral pennant 3

7 RACING AREAS

Attachment 1 shows the location of racing areas.

8 THE COURSES

8.1 2.4mR and Sonar Class

8.1.1 The diagrams in Attachment 2 for 2.4mR and Sonar show the courses, including the approximate angles between legs, the order in which marks are to be passed, and the side on which each mark is to be passed.

8.1.2 No later than the warning signal, the RC signal boat will display the course, approximate compass bearing and distance of the first leg.

Example:

5		<i>Course</i>
300		<i>Approximate magnetic bearing to Mark 1</i>
1.5		<i>Approximate distance to Mark 1. (nautical miles)</i>

Course 4: (4 Legs) Start - 1 - 1a – Gate(2S/2P) - 1 - 1a - Finish (Downwind)
Course 5: (5 Legs) Start – 1 – 1a – Gate(2S/2P) – 1 – 1a – Gate(2S/2P)- Finish (Upwind)

- 8.1.3 Marks 1 and 1a shall be rounded to port. Mark 1a is an offset mark and will be positioned to port of Mark 1.
- 8.1.4 (a) If only one Gate mark is set, boats shall round the single mark to port.
(b) Except when there is a change of course, the Gate will be positioned approximately to windward of the RC Signal Boat.
(c) The Gate may be laid after the starting signal.
- 8.1.5 Except when there is a change of course:
(a) the finish for course 4 will be to leeward of the Gate; and
(b) the finish for course 5 will be to windward of Mark 1.

8.2 Skud-18 Class

8.2.1 The diagrams in Attachment 3 for Skud-18 show the courses, including the approximate angles between legs, the order in which marks are to be passed, and the side on which each mark is to be passed.

8.2.2 No later than the warning signal, the RC signal boat will display the course, approximate compass bearing and distance of the first leg.

Example:

8		<i>Course</i>
300		<i>Approximate magnetic bearing to Mark 1</i>
1.5		<i>Approximate distance to Mark 1. (nautical miles)</i>

Course 6: (6 Legs) Start - 1 - 2 – Gate(3S/3P) - 2 – 3P - Finish
Course 8: (8 Legs) Start – 1 – 2 – Gate(3S/3P) – 2 – Gate(3S/3P) – 2- 3P - Finish
Course 10: (10 Legs) Start – 1 – 2 – Gate(3s/3P) – 2 – Gate(3S/3P) – 2- Gate(3S/3P)- 2 - 3P - Finish

9 MARKS

9.1 In racing area 1 (2.4mR Class):

- 9.1.1 Marks 1, 1a and Gate(2S/2P) will be red teardrop shape buoys.
9.1.2 Start and finish marks will be 24” orange tomato or RC boat with orange flag.

9.2 In racing area 2 (SKUD-18 Class):

- 9.2.1 Marks 1, 2, Gate(3S/3P), and 3P will be West Marine 6’ yellow cylinders.
9.2.2 Start and finish marks will be 24” orange tomato or RC boat with orange flag.

- 9.3 In racing area 3 (Sonar Class):
- 9.3.1 Marks 1 and Gate(2S/2P) will be 5' yellow tetrahedrons.
- 9.3.2 Mark 1a will be 24" orange tomato.
- 9.3.3 Start and finish marks will be 40" orange tomato or RC boat with orange flag.
- 9.4 New marks, as provided in instruction 12.1, will be:

2.4mR (race area 1)	Same as original marks
Skud-18 (race area 2)	Orange tetrahedrons
Sonar (race area 3)	Red tetrahedrons

- 9.5 The starting marks will be:
- a. The race committee signal boat at the starboard end displaying an orange flag.
- b. A race committee boat at the port end displaying an orange flag or a nearby orange tomato buoy.
- 9.6 The finishing marks will be:
- a. Two race committee boats each displaying an orange flag or
- b. A race committee signal boat displaying an orange flag and a nearby orange tomato buoy.
- 9.7 A race committee boat signalling a change of a leg of the course is a mark as provided in instruction 12.2.

10 AREAS THAT ARE OBSTRUCTIONS

The following areas are designated as obstructions: NONE.

11 THE START

- 11.1 RC signal boat for each race area will display code flag L with one sound as it departs the harbor.
- 11.2 The starting line will be between a staff displaying an orange flag on the RC signal boat at the starboard end and the port-end starting mark or staff displaying an orange flag on a RC boat.
- 11.3 A boat starting later than 4 minutes after her starting signal will be scored Did Not Start (DNS) without a hearing. This changes rules 63.1, A4 and A5.

12 CHANGE OF THE NEXT LEG OF THE COURSE

- 12.1 To change the next leg of the course, the race committee will lay a new mark (or move the finishing line) and remove the original mark as soon as practicable. When in a subsequent change a new mark is replaced, it will be replaced by an original mark.
- 12.2 Except at a gate, boats shall pass between the race committee boat signalling the change of the next leg and the nearby mark, leaving the mark to port and the race committee boat to starboard. This changes rule 28.1.

13 THE FINISH

- 13.1 For downwind finishes, the finishing line will be between a staff displaying an orange flag on the finishing line boat and either a nearby mark or a staff displaying an orange flag on a nearby RC boat.

- 13.2 For windward finishes, the finishing line will be between a staff displaying an orange flag on the finishing line boat and either a nearby mark or a staff displaying an orange flag on a nearby RC boat.
- 13.3 Flag “Second Substitute” displayed (no sound signal) by the race committee finish boat while boats are finishing indicates that another race will be sailed. This changes Race Signals.

14 PENALTY SYSTEM

- 14.1 For the SKUD-18 class, RRS 44.1 and 44.2 are changed so that only one turn, including one tack and one gybe, is required.

15 TIME LIMITS AND TARGET TIMES

- 15.1 Time limits are as follows:

Mark 1 time limit	Target Time
45 Minutes	50 - 70 Minutes

If no boat has passed Mark 1 within the Mark 1 time limit the race will be abandoned. Failure of the first boat to sail the course and finish within the target time shall not be grounds for granting redress. This changes rule 62.1(a).

- 15.2 Boats failing to finish within 30 minutes of the finish time of the first boat to sail the course and finish a race shall be scored “TLE” (Time Limit Expired) without a hearing. A “TLE” score shall be two more points than the number of boats that have sailed the course and finished within the time limit. This changes RRS 35, A 4.1, A 4.2, A5 and A11.

16 PROTESTS AND REQUESTS FOR REDRESS

- 16.1 Protest forms are available at the jury office, located in the Harbourmaster’s Office at Laishley Park Municipal Marina. Protests and requests for redress or reopening shall be delivered there within the appropriate time limit.
- 16.2 The protest time limit is 60 minutes after the hoisting of flag B – SI 4.3. The same time limit applies to protests by the RC and Jury about incidents they observe in the racing area. This changes RRS 61.3 and 62.2.
- 16.3 Notices will be posted no later than 30 minutes after the protest time limit to inform competitors of hearings in which they are parties or named as witnesses. Hearings will be held in the protest room, located in the Harbourmaster’s Office at Laishley Park Municipal Marina.
- 16.4 Notices of protests by the race committee or jury will be posted to inform boats under rule 61.1(b).
- 16.5 Breaches of instructions 18, 21, 23, 24, 25, 26, and 27 will not be grounds for a protest by a boat. This changes rule 60.1(a). Penalties for these breaches and for Class Rules may be less than disqualification if the jury so decides. The scoring abbreviation for a discretionary penalty imposed under this instruction will be DPI.
- 16.6 On the last scheduled day of racing a request for reopening a hearing shall be delivered
- (a) within the protest time limit if the requesting party was informed of the decision on the previous day;

- (b) no later than 30 minutes after the requesting party was informed of the decision on that day.

This changes rule 66.

- 16.7 On the last scheduled day of racing a request for redress based on a jury decision shall be delivered no later than 30 minutes after the decision was posted. This changes rule 62.2.
- 16.8 Decisions of the jury will be final as provided in rule 70.5.
- 16.9 If the RC posts a list of boats scored OCS, ZFP or BFD on the official notice board before the protest time limit, a request for redress based on such a posted score shall be made no later than 30 minutes after the protest time limit. This changes the first sentence of rule 62.2.

17 SCORING

- 17.1 Eleven (11) races are scheduled. Five (5) races are required to be completed to constitute a series and the championship.
- 17.2 The Low Point Score System of RRS Appendix A will apply as modified below.
 - 17.2.1 When fewer than six (6) races have been completed, a boat's series score will be the total of her race scores.
 - 17.2.2 When six (6) to eleven (11) races have been completed, a boat's series score will be the total of her race scores excluding her worst score.
- 17.3 To request correction of an alleged error in posted race or series results, a boat shall complete a 'Scoring Inquiry Form' available at the race office.

18 SAFETY REGULATIONS (DPI)

- 18.1 Check-in: before the warning signal of the first race of each day each boat shall pass the RC signal boat and hail her bow number until acknowledged by the RC.
- 18.2 Boats not leaving the harbour for any of the day's racing shall so inform the race committee.
- 18.3 A boat that retires from a race shall notify the race committee as soon as possible.
- 18.4 A boat that leaves the racing area between races shall notify the RC as soon as possible.
- 18.5 All competitors shall wear personal flotation devices while racing, except for brief periods while changing or adjusting clothing. Wet suits and dry suits are not personal flotation devices. This changes rule 40.

19 REPLACEMENT OF CREW OR EQUIPMENT

- 19.1 Substitution of competitors will not be allowed without prior written approval of the Technical Delegate, in accordance with RMM 6, Change of Crew, which states: "Only one change of crew shall be permitted during the event and only as a result of sickness or injury' any such changes shall occur only with the written permission of the IFDS Technical Delegate. Any such change of crew shall not cause the team to become ineligible to compete under both the rules of the IFDS RMM, as well as the current Functional Classification Manual.

19.2 Substitution of damaged or lost equipment will not be allowed unless authorized by the race committee. Requests for substitution shall be made to the committee at the first reasonable opportunity.

20 EQUIPMENT AND MEASUREMENT CHECKS


20.1 A boat or equipment may be inspected at any time for compliance with the class rules and sailing instructions. On the water, a boat can be instructed by a race committee equipment inspector or measurer to proceed immediately to a designated area for inspection.

21 ADVERTISING, BOW NUMBERS, IDENTIFICATION/EVENT STICKERS (DPI)

21.1 Boats shall display bow numbers and event bow stickers during the event as provided by the OA and shall be attached to both sides of the boat's hull at all times while racing. The instructions as to position will be supplied by the OA at registration. It is the responsibility of the crew to ensure the numbers and stickers remain on the boat and obtain replacements as necessary.

22 OFFICIAL BOATS

Official boats will be marked as follows:

RC boats	 or Blue Flag with white 'RC'
Jury boats	White Flag with Black 'J'
Press Boats	Yellow Flag with Black 'P'
RC Measurement/Equipment Check Boat	White Flag with a Black 'M'
Technical Delegate	White Flag with a Black 'TD'
Classifier	White Flag with a Black 'C'

23 SUPPORT BOATS (DPI)

23.1 Team leaders, coaches and other support personnel shall stay outside areas where boats are racing from the time of the preparatory signal for the first class to start until all boats have finished or retired or the race committee signals a postponement, general recall or abandonment.

23.2 Support boats shall be marked with their national letters (minimum size 200mm) in accordance with RRS Appendix G1.1 prominently on both sides of the outside of the hull or the outboard motor casing.

24 TRASH DISPOSAL (DPI)

24.1 Boats shall not put trash in the water. Trash may be placed aboard support and race committee boats.

25 HAUL-OUT RESTRICTIONS (DPI)

25.1 Boats shall not be hauled out during the regatta except with and according to the terms of prior written permission of the race committee.

26 DIVING EQUIPMENT AND PLASTIC POOLS (DPI)

26.1 Underwater breathing apparatus and plastic pools or their equivalent shall not be used around keelboats between the preparatory signal of the first race and the end of the regatta.

27 RADIO COMMUNICATION AND VIDEO EQUIPMENT (DPI)

27.1 Except in an emergency, a boat shall neither make radio transmissions while racing nor receive radio communications not available to all boats, except as provided for in IFDS RMM 5.5. This restriction also applies to mobile telephones.

27.2 Video and audio recording equipment on board is prohibited, unless supplied by the OA.

28 PRIZES

28.1 The overall winners in the 2.4mR class, in the SKUD-18 class and in the Sonar class will be awarded the title of IFDS World Champion 2012.

28.2 There are Challenge trophies for the winners in each class.

28.3 Medals will be awarded for 1st, 2nd and 3rd place overall.

28.4 Other prizes, including daily prizes, may be given at the discretion of the OA.

28.5 Challenge trophies are awarded for best total results:

- The Collot d'Escury Cup will be awarded to the World Champion in the Three Person Keelboat Class.
- The Rochester Yacht Club Perpetual Trophy will be awarded to the World Champion in the Two Person Keelboat Class.
- The Royal Netherlands Yacht Club Perpetual Trophy will be awarded to the World Champion in the Single Person Class.

29 DISCLAIMER OF LIABILITY

29.1 Competitors participate in the regatta entirely at their own risk. See rule 4, Decision to Race. The organizing authority will not accept any liability for material damage or personal injury or death sustained in conjunction with or prior to, during, or after the regatta.

30 INSURANCE

30.1 Each participating boat shall be insured with valid third-party liability insurance with a minimum cover of \$500,000 USD per event or the equivalent.

31 ADAPTATIONS COMMITTEE

31.1 The Adaptations Committee consists of the event Chief Classifier, the event Technical Delegate and the event Chief Measurer.

32 ADAPTATIONS AND PERSONAL ASSISTIVE DEVICES

- 32.1 At measurement, participants shall declare to the Classification Committee or its nominee(s), all adaptations and personal assistive devices (PADs) to be used in the event. The Classification Committee and its nominee(s) shall have the power to refer any adaptation or PAD to the Adaptations Committee.

33 MEDIA RIGHTS

- 33.1 Competitors grant the OA and IFDS, the unrestricted right and permission to use the name and the image for any text, photograph or video footage of either themselves or the boat they are sailing during the event to be published or broadcast in any media whatsoever (including but not limited to Press and TV advertisements or Internet), for either editorial or advertising purposes or to be used in press information; in this respect, competitors' names and any biographical material of themselves may also be used or reproduced in any way known. As part of the registration process, each individual participating crewmember will be required to sign a declaration accepting this waiver of rights.

34 PRO and RACE OFFICIALS



Hank Stuart – PRO (hstuart8m@gmail.com) - cell # 585-414-6105)

2.4mR -	Jeff Butzer (USA)
Skud-18	Walter Mielke (GER)
Sonar	Hank Stuart (USA)

Jury:

Chairman – Nelson Horn Ilha (BRA)
Vice Chairman – Tom Farquhar (USA)
Dick Rose (USA)
Elliot Levy (VEN)
Lynne Beal (CAN)
Costas Tsantilis (GRE)
Jury Secretary – Hank Kilion (USA)

Technical Delegate:

Henry Sleutel (NED)
Assistant –Paul Callahan (USA)
Assistant - Allen Fiske (USA)

Measurers:

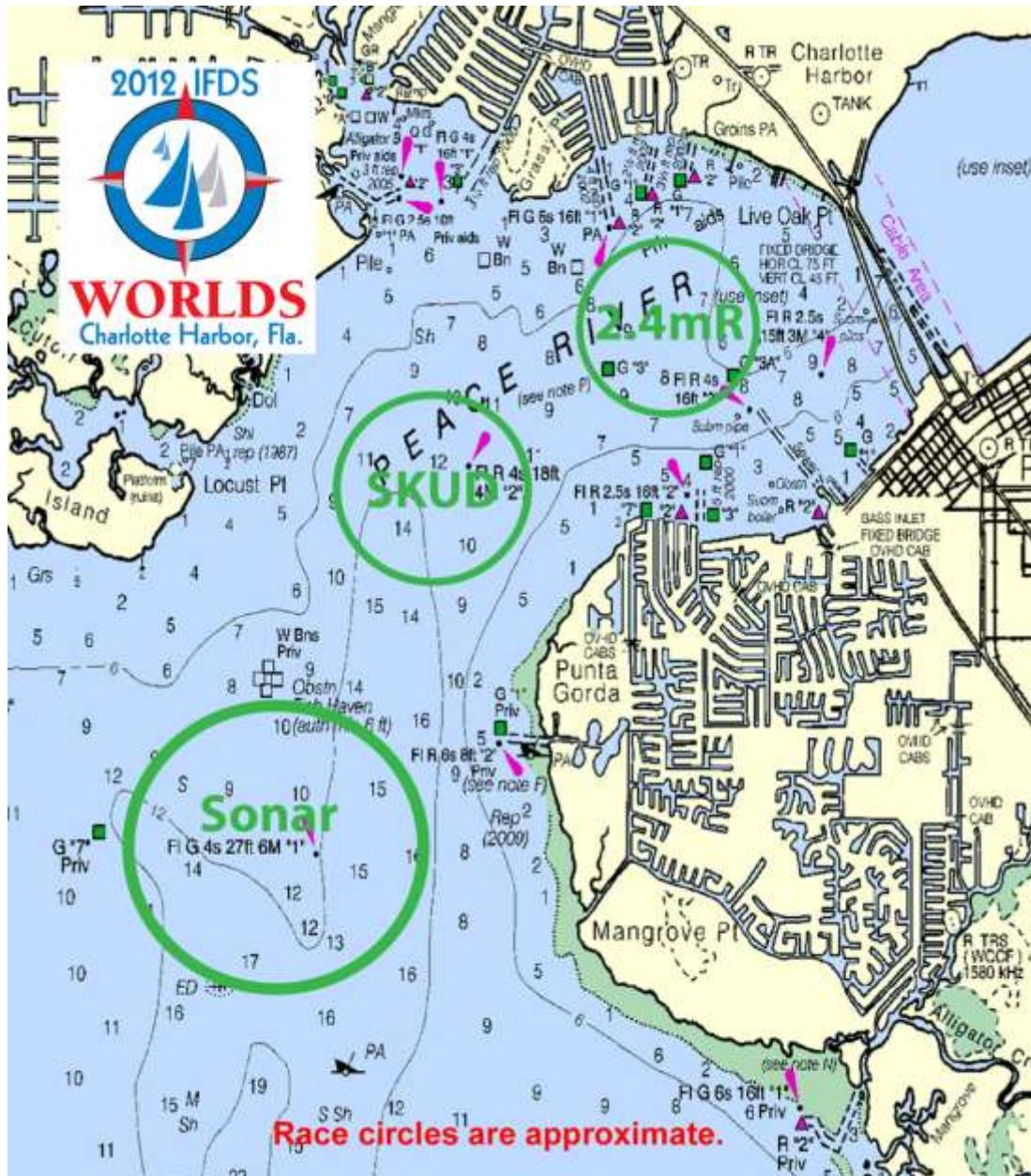
Chairman – Gene Hinkel (USA)
Stefan Ryott (SWE)
John Koopman (USA)

Classifiers:

Chairman – Jurgen Schwittai (GER)
Bernard Destrube (FRA)
Jenny Molson (CAN)
Holly King (GBR)

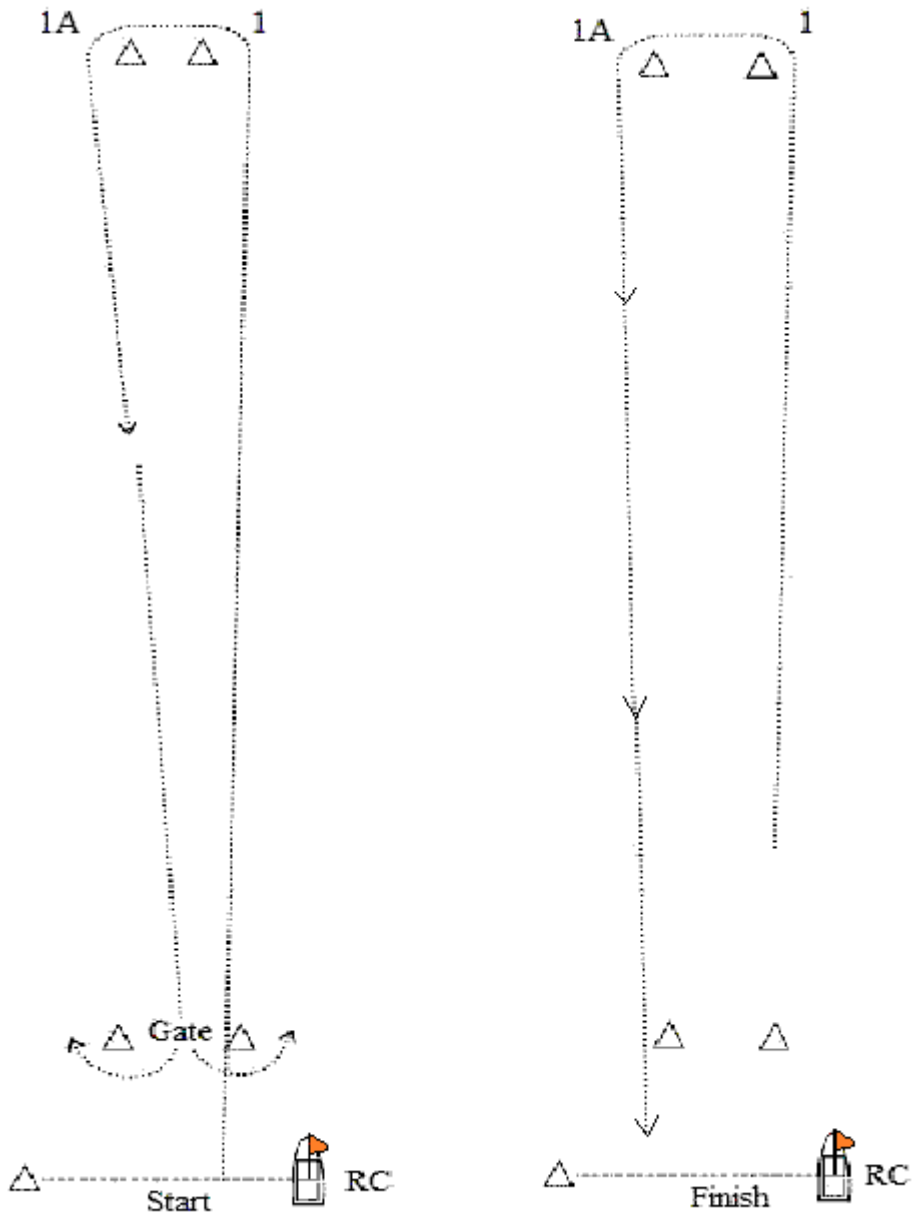
Attachment 1 - The Racing Areas
(Location and size of circles approximate)

- 2.4mR – Circle 1
- Skud-18 – Circle 2
- Sonar – Circle 3



**Attachment 2 – 2.4mR and Sonar
Course 4 and Course 5**

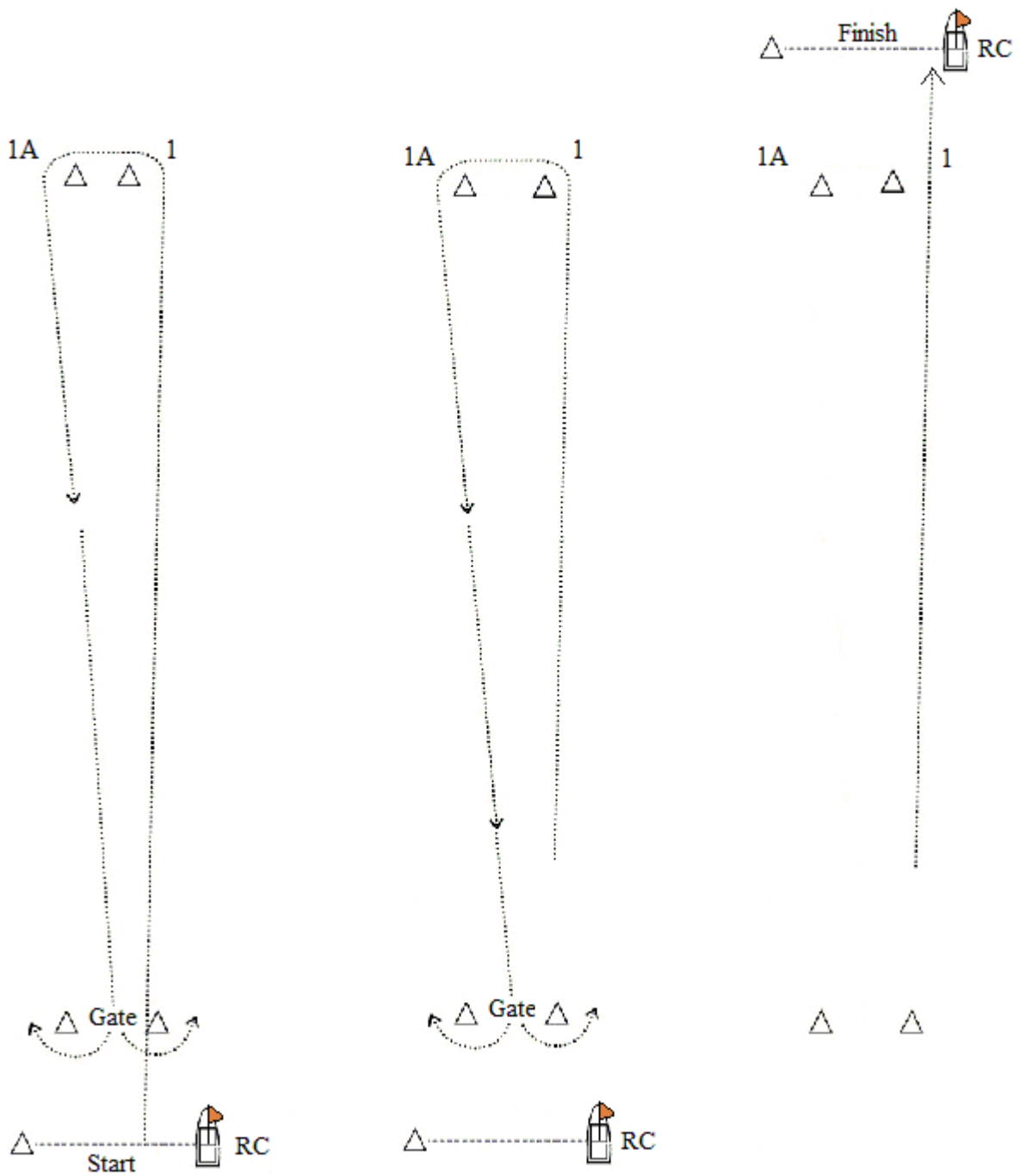
COURSE 4



Start – 1 – 1A – Gate(2S/2P) – 1 – 1A – Finish

Start – Finish may be between either the RC boat displaying an orange flag and a nearby mark
or
between two RC boats each displaying an orange flag.

COURSE 5



Start – 1 – 1A – Gate(2S/2P) – 1 – 1A – Gate(2S/2P) - Finish

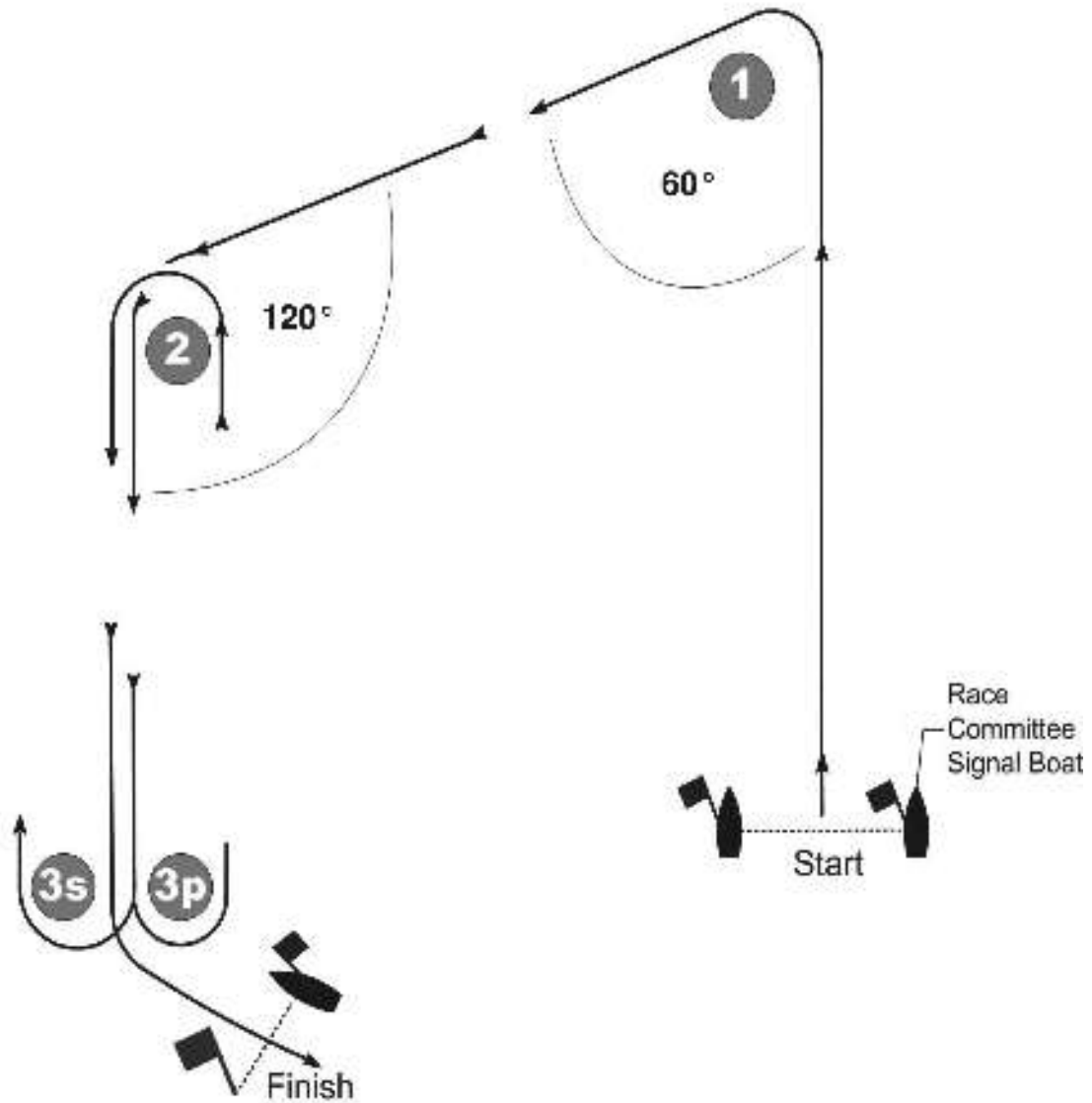
Start – Finish may be between either the RC boat displaying an orange flag and a nearby mark
 or
 between two RC boats each displaying an orange flag.

Attachment 3 – Skud-18 ONLY

Trapezoid Courses

Course 6 illustrated below

Course 6: (6 Legs) Start - 1 - 2 – Gate(3S/3P) - 2 – 3P - Finish
See SI 8.2 for other course options, Course 8 or 10 (not illustrated)



Start – Finish may be between either the RC boat displaying an orange flag and a nearby mark
or
between two RC boats each displaying an orange flag.

Attachment 4 – US SAILING PRESCRIPTIONS

Rule 40–US SAILING prescribes that every boat shall carry life saving equipment conforming to government regulations that apply in the racing area.

See http://raceadmin.ussailing.org/Rules/Personal_Flotation_Device.htm

Add Rule 61.4–US SAILING prescribes that no fee shall be charged for protest or request for redress.

Rule 68–US SAILING prescribes that:

- (a) A boat that retires from a race or accepts a penalty does not, by that action alone, admit liability for damages.
- (b) A protest committee shall find facts and make decisions only in compliance with the rules. No protest committee or US SAILING appeal authority shall adjudicate any claim for damages. Such a claim is subject to the jurisdiction of the courts.
- (c) A basic purpose of the rules is to prevent contact between boats. By participating in an event governed by the rules, a boat agrees that responsibility for damages arising from any breach of the rules shall be based on fault as determined by application of the rules, and that she shall not be governed by the legal doctrine of ‘assumption of risk’ for monetary damages resulting from contact with other boats.

Rule 76.1–US SAILING prescribes that an OA or RC shall not reject or cancel the entry of a boat or exclude a competitor eligible under the notice of race and sailing instructions for an arbitrary or capricious reason or for reason of race, color, religion, national origin, gender, sexual orientation, or age.

Add Rule 76.3–US SAILING prescribes that a boat whose entry is rejected or cancelled or a competitor who is excluded from a race or series shall be, upon written request, entitled to a hearing conducted by the Protest Committee under Rules 63.2, 63.3, 63.4 and 63.6.

Rule 88.2–US SAILING prescribes that SIs shall not change or delete Rules 61.4 or 76.3, Appendix F, or its prescriptions to Rules 40, 68 or 76.1. However, for an international event the prescription to Rule 40 may be deleted.