

Charlotte Harbor Regatta February 3–5, 2017

Sailing Instructions – Circle Two

1.0 RULES

- 1.1 The regatta will be governed by the rules as defined in the *Racing Rules of Sailing*.
- 1.2 Rules changes in these Sailing Instructions
 - 1.2.1 (SI 4.1) When the flag AP is displayed ashore, '1 minute' is replaced with 'not less than 30 minutes' in the race signal AP.
 - 1.2.2 (SI 11.5) A boat starting later than four (4) minutes after its starting signal will be scored DNS by the Race Committee without further hearing. This changes Rules 35, A4.1, and A5.
 - 1.2.3 (SI 13.2) Boats failing to finish within 20 minutes of the first boat in the class to finish will be scored Time Limit Expired (TLE - See 13.2).
 - 1.2.4 (SI 17.2) When five or more races are completed there will be one score excluded. This changes Rule A2.

2.0 NOTICES TO COMPETITORS—Notices to competitors will be posted on the official notice board located at Charlotte County Beach Park (“CCBP”).

3.0 CHANGES—Changes to the Sailing Instructions will be posted on the official notice board at CCBP prior to 1000 following the Friday, February 3, 0930 Skippers Meeting. Thereafter any change shall be posted no later than 0930 on the day it will take effect, except that any change to the schedule of the races shall be posted on the official notice board at CCBP by 2000 on the day before it will take effect.

4.0 SIGNALS MADE ASHORE

- 4.1 Signals made ashore will be displayed on a flagpole at CCBP.
- 4.2 When the flag AP is displayed ashore, '1 minute' is replaced with 'not less than 30 minutes' in the race signal AP.

5.0 RACING SCHEDULE

5.1 Circle 1 Harbor 20, 2.4m, Precision 15, Hobie Wave*

Saturday	02/04/17	1055	First warning	Additional race(s) to follow
Sunday	02/05/17	0955	First warning	Additional race(s) to follow
Sunday	02/05/17	No Start after 1430		

5.2 Circle 2 F18, F16**, Hobie 16, Weta, Wind Rider

Friday	02/03/17	1055	First warning	Additional race(s) to follow
Saturday	02/04/17	1055	First warning	Additional race(s) to follow
Sunday	02/05/17	0955	First warning	Additional race(s) to follow
Sunday	02/05/17	No Start after 1430		

**5.2.1 Circle 2 F16 Cats Race Saturday & Sunday Only

5.3 Number of Races

5.3.1 Classes racing two (2) days: Seven (7) races are planned.

5.3.2 Classes racing three (3) days: Eleven (11) races are planned.

5.3.3 A minimum goal of three (3) races per day is anticipated. No more than four (4) races shall be raced during any one day for all classes. One race constitutes a regatta.

6.0 CLASS FLAGS — The class flags used as the warning signal in Rule 26 will be the regatta issued class flags for each class or color designated below.

Circle 1

6.1.1	Harbor 20	Class Logo on White
6.1.2	2.4mR	Black Class Logo on White

Circle 2

6.3.1	F18	Blue Class Logo on White
6.3.2	F16	Red Class Logo on White
6.3.3	Hobie 16	White Class Logo on Red
6.3.4	WETA Tri	Black Class Logo on White
6.3.5	Wind Rider	Black Class Logo on White

7.0 RACING AREAS AND STARTING ORDER—Locations of racing circles are shown on **Attachment 1** to these Sailing Instructions. Starting Order for the first race of the day:

- 7.1 Circle 1 starting order for the 1st race Saturday & Sunday: Harbor 20; 2.4mR.
Additional races will be started with the display of the Class Flag.
- 7.2 Circle 2 starting order for the 1st race of the regatta Friday: F18, Hobie 16
WETA/WindRider.
Additional races will be started with the display of the Class Flag.
- 7.2.2 Circle 2 starting order for the 1st race Saturday & Sunday: F18/F16 (combined), Hobie 16, WETA/WindRider.
Additional races will be started with the display of the Class Flag.

8.0 COURSES—Courses are shown in **Attachment 2** to these Sailing Instructions.

9.0 MARKS

- 9.0.1 Circle 1 marks, their location and colors are shown on Attachment 2 Circle One.
- 9.0.2 Circle 2 marks, their location and colors are shown on Attachment 2 Circle Two.
- 9.0.3 Change of course MARKS are the same MARK placed at the change location.
- 9.0.4 **At the starting line, the race committee may attach an orange buoy to the starboard end RC boat, at or near its stern. If so, the starboard-end starting MARK will be the combination of the RC boat and the buoy. A boat that touches the RC boat or the buoy (or passes between them) breaks RRS 31.1 (Touching A Mark).**

10.0 STARTING AND FINISHING LINES

- 10.1 The starting line will be between a staff displaying an orange flag on the Race Committee signal boat on the starboard end of the line and the course side of the mark at the port end of the line.
- 10.2 Finishing lines for Circle 1 are shown on Attachment 2 Circle One.
- 10.3 Finishing lines for Circle 2 are shown on Attachment 2 Circle Two.

11.0 THE START

- 11.1 Each participant shall approach the RC Signal Boat on starboard tack and give its class and sail number, and receive acknowledgment from the Race Committee, for check-in before the first race of each day.
- 11.2 Races will be started using Rule 26 with the warning signal made 5 minutes before the starting signal. A series of sound signals may be made as a courtesy approximately 1 minute before warning signal for each race.
- 11.3 The Race Committee will make the warning signal for each succeeding class not sooner than one (1) minute after the starting signal of the preceding class.
- 11.4 A boat starting later than four (4) minutes after its starting signal will be scored DNS by the Race Committee without further hearing. This changes Rules 35, A4.1, and A5.

12.0 INDIVIDUAL RECALL—The Race Committee may attempt to notify the boat or boats being recalled by hailing the sail number. Failure of a boat to see or hear recall notification or the timing and order of such hails will not be grounds for redress.

13.0 TIME LIMIT

- 13.1 The time limit for the first boat to finish each race is 75 minutes.
- 13.2 Boats failing to finish within 20 minutes after the first boat sails the course and finishes will be scored Time Limit Expired (TLE) and will be given a score 2 points higher than the score for the last boat to finish. This changes Rule 35, A4.1, and A5.

14.0 PROTESTS AND REQUESTS FOR REDRESS

- 14.1 At the finish of the race or after withdrawal from the race, a boat lodging a protest shall inform the Race Committee of the sail number of the boat it intends to protest.
- 14.2 Protest and redress forms are available at the Official Regatta Desk at CCBP. Completed forms must be submitted to the Official Regatta Desk Officer as soon as possible, and not later than the protest time limit for each day of racing.
- 14.3 The protest time limit is 60 minutes after the Race Circle Signal Boat docks. Docking time shall be determined by each Circle Principal Race Officer and posted on the Official Notice Board at CCBP.
- 14.4 Protest notices will be posted on the Official Notice Board at CCBP as soon as possible after the protest time limit to inform the competitors the time of the hearing to which they are a party.
- 14.5 All protest hearings will be held at the designated time specified in the official protest notices at the CCBP.
- 14.6 Boats breaking Rule 31 by hitting the Signal Boat shall be scored DSQ without a hearing.

15.0 SAFETY AND BOAT WITHDRAWAL — Any boat withdrawing from a race shall notify the Race Committee Signal Boat or Safety Boat

16.0 RADIO COMMUNICATIONS

16.1 Circle 1 VHF 68

16.2 Circle 2 VHF 71

16.3 Radio communications from racing boats to any Race Committee boat shall be limited to emergencies.

17.0 SCORING

17.1 The low-point scoring system of Appendix A will apply except as modified below. One race is required to be completed to constitute a regatta.

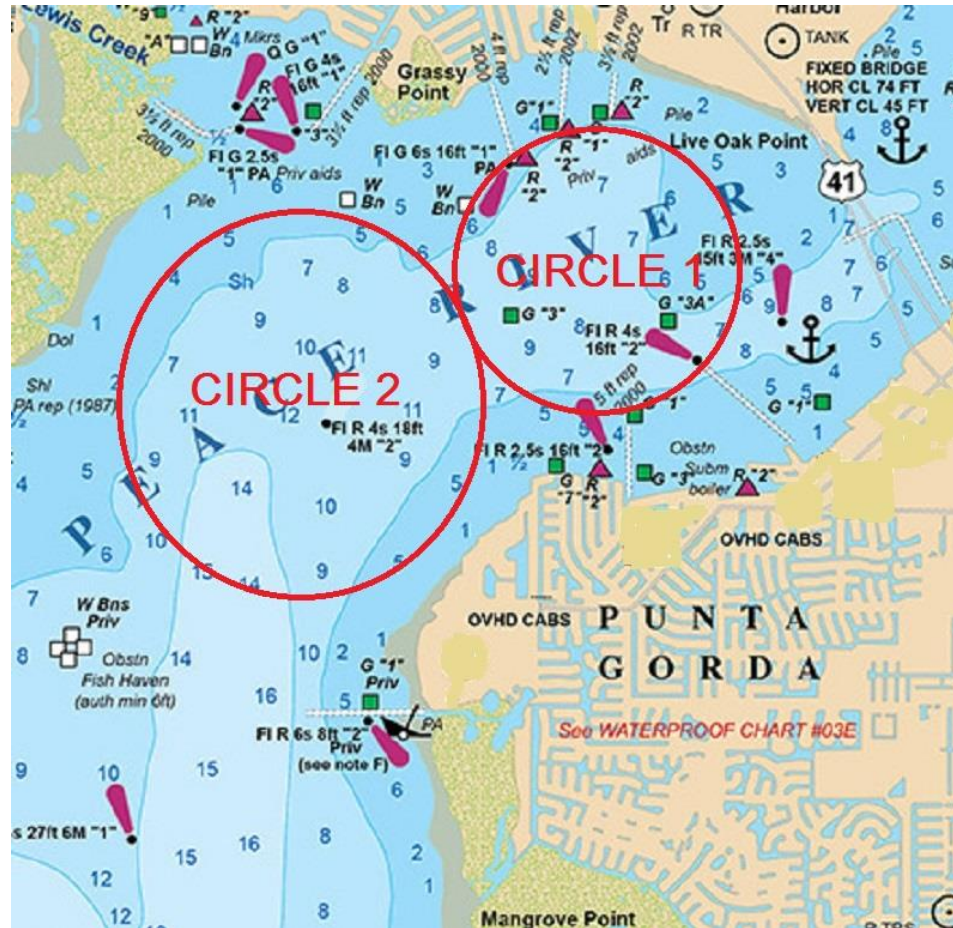
17.2 When five or more races are completed there will be one score excluded. This changes Rule A2.

18.0 AWARDS

18.1 Awards will be presented to the first, second, and third place finishers in each class of five (5) or more boats for the series.

Charlotte Harbor Regatta February 3–5, 2017

Sailing Instructions - Attachment One



Circle locations are approximate and this chart is intended for reference use only, not navigation.

Attachment Two --- CIRCLE TWO

Charlotte Harbor Regatta Sailing Instructions

Course Master Plan — F18, F16, Hobie 16, WETA Trimaran, WindRider 17



Long Windward Mark (Marker 1b) ORANGE Inflatable with offset mark 1b1 RED Ball Windward mark for the Hobie 16 — All races W/L/W.



Short Windward Mark (Marker 1a) YELLOW Inflatable with NO OFFSET MARK – 1a is the Windward mark for the A-Cat, F18, F16, WETA & Wind Rider Trimaran classes.



Jibe Mark 2 YELLOW Inflatable shall be left to Port and used by the F18 & F16 Classes.

Inner Loop Gate Marks (Markers 2s & 2p) RED Cone(s) shall be used by the Hobie 16, WETA & Wind Rider Trimaran classes.



Start Line between signal boat ORANGE Flag and ORANGE Pin mark – All Circle Two classes.
Leeward Finish Line (Hobie 16, WETA & Wind Rider) between BLUE Signal Boat flag and WHITE Finish mark.



Outer Loop Gate Marks (Markers 3s & 3p) RED Cones shall be used by the F18 & F16 Classes.

Outer Loop Finish for F18 & F16 classes between Mark Boat Orange Flag Staff and Marker 3p.

Circle Two has two windward marks. WETA and Wind Rider Trimarans shall use the short windward mark (1a – no offset mark) and Gate Marks 2s & 2p.

The long windward Mark (1b) used exclusively by the Hobie 16 class shall have an offset mark (1b1).

The Hobie 16, WETA & Wind Rider Classes shall finish between a Mark Boat and WHITE Ball, leaving the WHITE Ball to Port.

Mark 1a is the windward mark for the F18, F16, WETA & Wind Rider classes.

Mark 1b/1b1 is the windward mark for the Hobie 16 class.

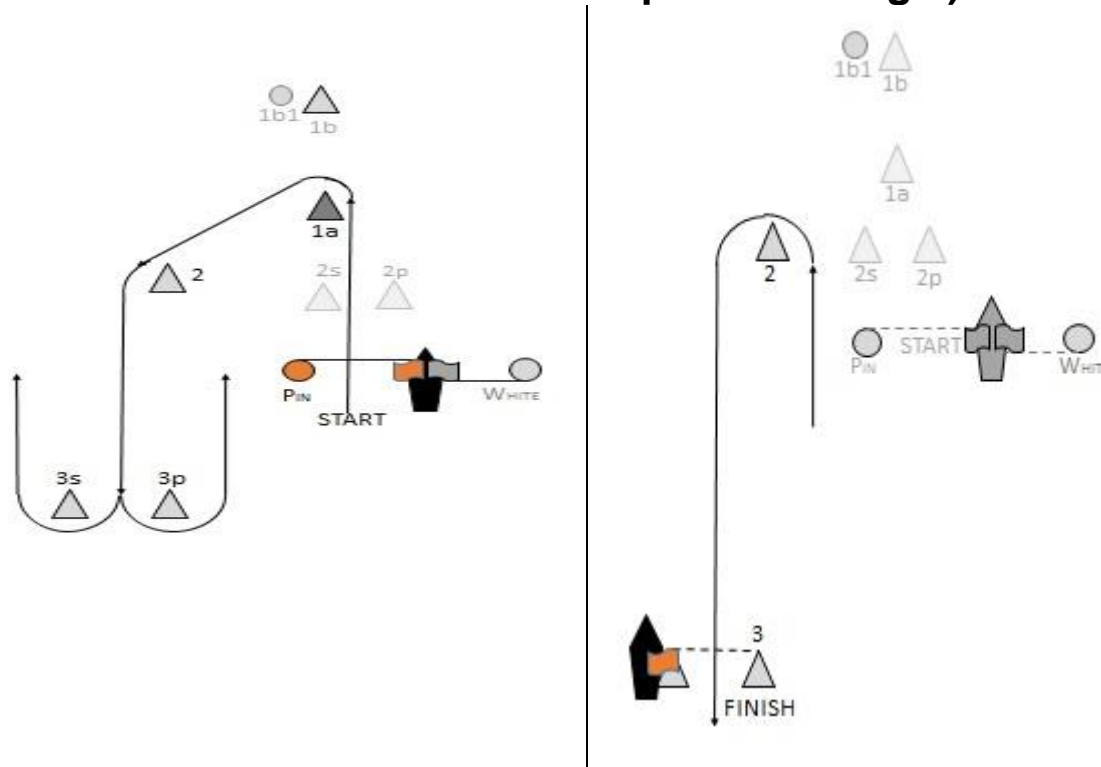
Gates 2s/2p & 3s/3p shown in each course may be substituted by a single **Mark 2p or 3p**, without signaling.

Mark 2p and 3P must be left to Port when rounding.

Attachment Two—CIRCLE TWO
Charlotte Harbor Regatta Sailing Instructions
F18 & F16 Course — Outside Loop

The F18 & F16 classes use the short (1a) windward mark with no windward mark offsets at 1a or 2.

3. Course L5 (L5 = Leeward Finish / Two + Laps = Five Legs)



L5 Course—Start-1a-2-3s/3p-2-Finish Leeward—Five (5) Legs (Illustrated)

The F18 & F16 outer loop leeward Finish (at mark 3p) course is illustrated.

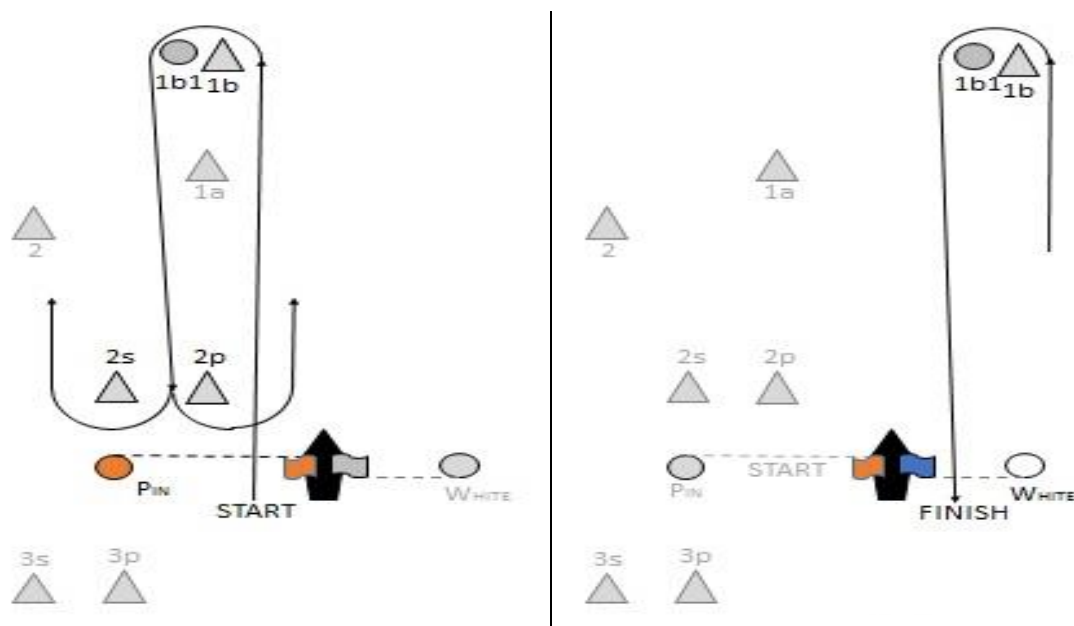
Attachment Two—CIRCLE TWO

Charlotte Harbor Regatta Sailing Instructions

Hobie16 Courses — Inside Loop

Offset Mark 1b1 used in conjunction with **Mark 1b** will be placed at approximately a right angle to the first leg of the course and approximately 150 feet away from **Mark 1b**.

4. Course L4 (L4 = Leeward Finish / Two Laps = Four Legs)

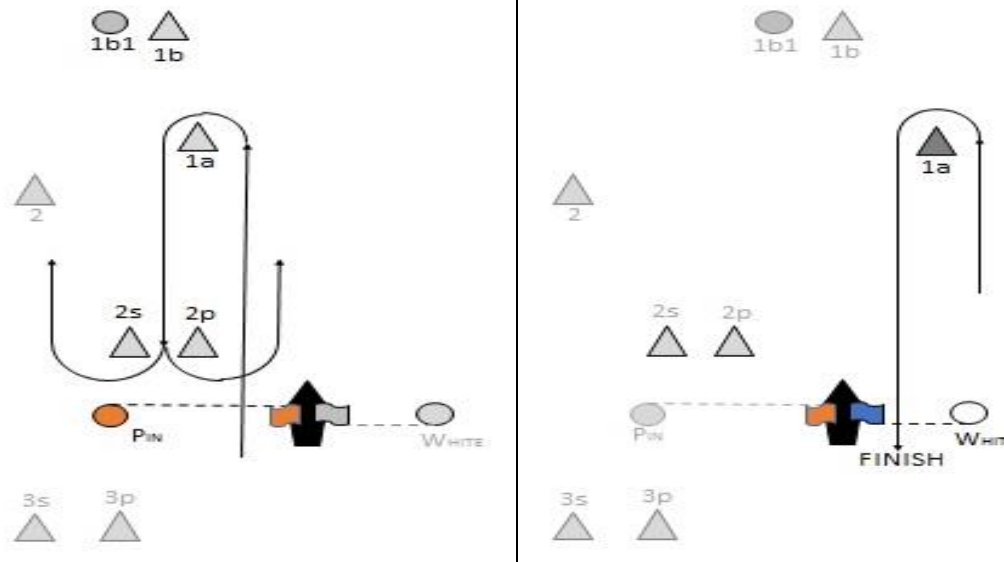


L4 Course—Start—1b-1b1—2s/2p—1b-1b1—Finish Leeward—Four (4) Legs (Illustrated)

Attachment Two—CIRCLE TWO

Charlotte Harbor Regatta Sailing Instructions WETA Trimaran, WindRider 17

5. Course L4 (L = Leeward Finish / Two Laps = Four Legs)



L4 Course—Start—1a—2S/2P—1a—Finish Leeward—Two Laps = Four (4) Legs (Wind Rider/WETA Illustrated)